



*****ECRWSSDDM*****
LOCAL
POSTAL CUSTOMER

PRST STD
ECRWSS
U.S. POSTAGE
PAID
CLINTON, IOWA
PERMIT, NO. 3



NOV 2024 | CITY OF CLINTON QUARTERLY NEWSLETTER | VOLUME 8 | ISSUE 4

Mayor & City Administrator Message Page 1	Clinton Public Library Page 6-7	Regional Water Reclamation Facility Page 13
City Contacts Page 2	Clinton Municipal Airport Page 7	Public Works Department..... Page 13
Finance Department Page 2	Clinton Fire Department Page 8	Community Development Page 15
Municipal Transit Administration Page 2	Building & Neighborhood Services Page 9, 11, 14	<i>Look for the next edition of The Lighthouse Newsletter, coming to your mailbox in Feb 2025!</i>
Parks & Recreation Dept. Activities Page 4-5	Clinton Police Department..... Page 12	

A MESSAGE FROM THE MAYOR AND CITY ADMINISTRATOR

Progress and Future Goals for the City of Clinton, Iowa

Over the past year, the City of Clinton has made significant strides in economic development, community engagement, and infrastructure improvements. As we celebrate these accomplishments, it's vital to look ahead and set goals that will further enhance the quality of life for our residents.

Economic development is central to our mission. It involves creating growth that benefits the community, enhancing prosperity and quality of life. This year, we continue to watch construction of the Regional Water Reclamation Facility (RWRF) expansion project in partnership with ADM. We also made significant improvements at the Rail Park, including new sewer installations and the construction of 36th Avenue South, funded by the Iowa DOT and Atlas Roofing. These developments aim to boost job growth and attract businesses to the Clinton Industrial Rail and Air Park. The construction of Atlas Roofing's Clinton facility at the Rail Park is underway, and 117 new jobs will be created once the facility is open.

In terms of community enhancements, the city has actively pursued projects that encourage engagement. The installation of trail lights along the northern portion of the levy trail will improve safety and outdoor activities, while the new MTA Bus Stop at 6th Avenue South and South 2nd Street enhances public transportation accessibility. Parks and Recreation programs have seen impressive participation, showcasing a community that values health and wellness. The second year of the Tailgate N' Tallboys concert series was a success, with attendance surpassing the first year, further establishing Clinton as a regional entertainment hub. The first year of the sculptures along

the riverfront, at the Library and at City Hall, as a part of the Quad Cities Art group, synchronized wonderfully with the "Paint it Back" mural project and all the other murals in Clinton that provide new, inspiring art and culture. The painting of a historical train engine on the riverfront by local volunteers has added to the city's charm and honored our heritage. City partnerships with developers continues as new homes go up, Cottage Bluff's 33 apartments for 55+ are now open, and the Valley Bluff apartments project of over 230 apartments is in the final stretch of completion (with apartments filling up as soon as they are built). It is also exciting to have Marshal's opening in October 2024.

Infrastructure remains a priority. Recent road maintenance projects, including those on Springdale Drive, South 13th Street, 19th Avenue North/North 2nd Street and Main Avenue, reflect our commitment to keeping the city safe and navigable. A fully ADA accessible pavilion has been completed at Eagle Point Park.

In strengthening our leadership, we welcomed a new Fire Chief Mike McQuistion, Human Resources Director Jeannine Wolf-Omerza, and Information Supervisor Eric Entwistle, all bringing fresh perspectives.

As we focus on community safety, we're pleased to see crime rates decline while ambulance calls rise, ensuring the well-being of our residents.

Looking forward, the City of Clinton has ambitious goals to ensure ongoing growth and improvement. We plan to further expand the Rail Park, including adding a locomotive drop area to facilitate rail car movement. In 2025 or into 2026, Iowa American Water will be constructing

a new water tower that will not only support the Rail Park but also the City of Low Moor. In June, the city will co-host the third annual Tailgate N' Tallboys with USA Concerts, and in September 2025, the airport will hold the "Fly Iowa" event, showcasing Clinton's role in aviation. A major road project, Drive to Prosperity, is set to renovate Manufacturing Drive and reconstruct Bluff Boulevard. Funded by \$15 million from the federal government and \$7.2 million from the state, the first phase will begin in the spring of 2025, focusing on safety improvements and infrastructure upgrades on Manufacturing Drive. Phase II, Bluff Boulevard, will follow in 2026-2027. Meanwhile, the city has budgeted \$2.4 million for a pavement management plan in 2025, alongside several large storm and wastewater sewer separations. Our Community Development team is committed to eliminating blight and nuisance properties, enhancing community appeal, and encouraging residents to make Clinton their home. On the sustainable energy front, we're set to open the industrial side of the RWRF in partnership with ADM in late 2025, while working on converting methane to renewable natural gas by 2026. This partnership promises substantial environmental benefits.

In conclusion, the City of Clinton has made remarkable progress over the past year, guided by a commitment to stewardship and community improvement. Our future goals reflect a dedication to growth and enhancing the quality of life for all residents. With active community participation and a clear vision, we are excited about the possibilities ahead, always remembering our duty to plant the seeds today for future shade tomorrow.

Clinton Parks & Recreation

ERICKSEN COMMUNITY CENTER

1401 11TH AVE N. CLINTON IA 52732 • 563-243-1260

 [WWW.FACEBOOK.COM/CLINTONRECREATIONDEPARTMENT](https://www.facebook.com/clintonrecreationdepartment) [INSTAGRAM: CITYOFCLINTONPARKSANDREC](https://www.instagram.com/cityofclintonparksandrec) [TWITTER: @CITYOFREC](https://twitter.com/CITYOFREC)



clintoniowa.recdesk.com

This system will allow registered users to reserve park shelters and other facilities, as well as register for programs, memberships and classes as they are available.

Create an account today.

CONTACTS

City Administration

Clinton City Hall: 611 S 3rd Street
P.O. Box 2958 Clinton, IA 52732
www.cityofclintoniowa.gov
563-242-2144

Building & Neighborhood Services

344 3rd Avenue S, Clinton, Iowa 52732
563-244-3360

Clinton Fire Department

Emergencies: 911 | Fax: 563-217-4570
Central: 344 3rd Ave S - 563-242-0125
Chancy: 2303 S 14th St - 563-242-0612
Lyons: 2311 Roosevelt St - 563-242-0321

Clinton Municipal Airport

2000 S 60th Street, Clinton, Iowa 52732
P: 563-242-3292 | Fax: 563-242-3488
www.facebook.com/FlyClinton

Clinton Police Department

113 6th Avenue South, Clinton, IA 52732
Emergencies: 911
Non-Emergency: 563-243-1458

Clinton Public Library - Main

306 8th Avenue South, Clinton, IA 52732
563-242-8441 | www.clintonpubliclibrary.us

Clinton Public Library - Lyons
Friends of the Library

105 Main Avenue, Clinton, IA 52732
563-594-6750 | www.clintonpubliclibrary.us

Clinton Regional Water
Reclamation Facility

4025 South 30th Street, Clinton, Iowa 52732
P: 563-242-4064 | F: 563-243-4066

Public Works Department

P: 563-242-5756

Clinton County Area Solid Waste Agency

4292 220th Street, Clinton, IA 52732
P: 563-243-4749 | E: ccaswa@ccaswa.com

Parks & Recreation Department

1401 11th Avenue North, Clinton, IA 52732
www.cityofclintoniowa.gov/225/Parks-and-Recreation-Department
P: 1-563-243-1260 | F: 1-563-242-6131

Municipal Transit Administraion

1320 S 2nd Street, Clinton, Iowa 52732
563-242-3721

Community Development Department

611 South 3rd Street
P: 563-242-7770

CITY OF CLINTON
BOARDS, COMMISSIONS & COMMITTEES

The City of Clinton always welcomes applications from those interested in serving on its boards, commissions and committees.

See the list of all the boards, commissions and committees in the City of Clinton below:

- ADA Advisory Commission
- Advisory Appointments Committee
- Airport Commission
- Capital Improvements Planning Committee
- Civil Service Commission
- Finance Committee
- Historic Preservation Commission
- Housing Authority
- Housing Board of Appeals
- Human Rights Commission
- Library Board
- Mayor's Youth Commission – High School Division
- Neighborhood Improvement Committee
- Parks and Recreation Advisory Board

- Plan Commission
- Traffic Study Commission
- Trails Advisory Committee
- Tree Commission
- Vehicle for Hire Board of Appeals
- Zoning Board of Adjustment

Visit the City of Clinton's website to learn more about each board, commission or committee. Applications can be completed online at www.cityofclintoniowagov/311/boards-committees-and-commissions and select "Application to Serve on Board, Committee and Commission". If there are not any current vacancies on a board, commission or committee, all applications stay on file for 2 years.

It is the policy of the City to provide equal opportunity to all applicants and the City does not discriminate against any person because of race, creed, color, religion, sex, national original, disability, age, familial status, political affiliation, citizenship or sexual orientation.

Please contact the City Clerk's office with any questions at (563) 244-3421.

MUNICIPAL TRANSIT ADMINISTRATION (MTA)

MTA NEW CENTRAL TRANSFER POINT BUILDING



The Municipal Transit Administration's (MTA) new building at the Central Transfer Point (CTP) at 6th Avenue South & Second Street is nearing completion. Security cameras will be installed in and around the building for the safety and security of the passengers. The passenger waiting area will be open from 6:00 A.M. to 5:30 P.M., Monday - Friday, and on Saturdays from 8:00 A.M. to 3:00 P.M. The bus station building will be secured and closed on Sundays and holidays, when the MTA buses are not operating.

The new bus station building has a climate-controlled waiting area for the bus passengers. The waiting area is facing the street, so the passengers are able to see the buses as they pull into the transfer point.

MTA RIDERSHIP INCREASE

The MTA experienced over an 11% increase in passenger rides for FY2024 (July 1, 2023 – June 30, 2024) compared to FY2023. The buses provided 251,097 rides for FY2024 and the vehicles traveled 350,709 miles during that same time. The contracted NEMT rides provided by the MTA were 6,380 rides of the total amount stated. Many of those trips were for appointments in other cities such as the Quad Cities area, Iowa City and one of the longest trips went to the Mayo Clinic in Rochester, Minnesota. The MTA typically has trips daily coming in or going out of Clinton through the program.

WHERE'S MY MTA BUS?

To see the MTA bus's locations, use the link:
<https://clinton.mobilitat.com:8421/public/map/index.shtml>

Or use the QR code:



Wherever Life Takes You... Ride With Us!!

FINANCE DEPARTMENT

YOUR PET LICENSE RENEWAL IS RIGHT
AROUND THE CORNER!

Why License your Pet?

Pet licenses are mandatory in nearly every community across North America. Why? Because licenses help keep pets and the communities they live in safe. Licenses are valid for the calendar year (January 1st thru December 31st).

What will you need?

Licensing your pet will require specific information and proof. Having these items at the ready allows for the fastest experience.

Rabies Vaccination Proof: This document may be in the form of a Rabies Vaccination Certificate that has been signed by a veterinarian or certified professional. It is the law that pets must be up-to-date on their rabies vaccinations.

Spay/Neuter Certificate: Evidence that your pet has or has not been spayed or neutered.

Microchip details: You are provided with a Unique Identification (ID) number when you microchip your pet.

The City's Application/Renewal Form is available at the following link to our website: www.cityofclintoniowa.gov/468/AnimalPet-Licensing

The City's Ordinance pertaining to Animal Protection and Control is available at the following link to our website:

<https://codelibrary.amlegal.com/codes/clintonia> (Chapter 91)

New in 2024, for those residents that house more than 6 registered pets in their home, the City of Clinton implemented an Excessive Animal Permit. If you had more than 6 pets in your home as of 6/11/2024, an Excessive Animal Permit is required. The fee for this permit is a one-time payment of \$10.



Intuitive cash
management
products



Time-saving
automated processes
and services



Protection from
risks and fraud



Capital resources
and expertise to
fuel your ambitions



Maximize your
earning potential
on liquid assets

Total Business Solutions



CITIZENS FIRST BANK

www.GoCFB.bank/total-business-solutions





Visitors to the festival will enjoy driving through and viewing over 40 lighted displays, 500,000+ supporting lights, castles, streams and a gingerbread lodge that fill a 1.1 mile loop of Eagle Point Park located off of highway 67 North.



FAMILY FUN WALK

Wednesday, November 27th 5:30-8:30 pm
Kick off the festival with the opportunity to enjoy the enchanting displays on foot. Santa will be in the lodge for children to visit, as well as food available for purchase!

SANTA'S HOURS

*December 1 5:30-8pm,
December 8th 6pm-8pm,
and December 15 5:30-8pm*
Meet With Santa Claus
at Eagle Point Lodge



CRAFT FAIR

*December 7th 9am-4pm and
December 8th 11am-3pm*
Vendors, Crafters & Food Vendors

REGULAR SEASON DATES & HOURS

Thanksgiving (November 28th) - December 30th
M-F 6pm-9pm and Saturday & Sunday 5pm-9pm
Pricing \$10/car \$2/person vehicles over 10 people

PARKS & RECREATION DEPARTMENT ACTIVITIES

“WE WORK... SO YOU CAN PLAY!”

ERICKSEN COMMUNITY CENTER: 1401 11TH AVENUE NORTH, CLINTON, IA 52732 | P: 1-563-243-1260 | HOURS: MON - FRI 8AM - 5PM

MARINA OFFICE (LOWER LEVEL OF CANDLELIGHT INN): 511 RIVERVIEW DR, CLINTON, IA | P: 563-242-3600 | HOURS: APRIL - OCT 9AM - 6PM

WEBSITE: www.cityofclintoniowa.gov | ONLINE REGISTRATION: [HTTPS://CLINTONIOWA.RECDESK.COM](https://clintoniowa.recdesk.com)

Follow us on Social Media: Facebook  City of Clinton - Parks & Recreation Department | Instagram  CityofClintonParksandRec | Twitter  @CityofRec

ACTIVITY AREA HOURS

ADMIN OFFICE - OPEN YEAR-ROUND	
8am - 5pm, Monday - Friday (except Holidays)	
ACTIVITY AREA HOURS	
Year- round (except Holidays)	
MON-FRI	Jog and Walk Club Fitness Center Day Pass
	6am-9am 6am-8pm
SATURDAY	All Areas - Drop in Rec
	Noon-5pm (Pending No Leagues)
SUNDAY	All Areas - Drop in Rec
	Noon-5pm (Pending No Leagues)
June 1 - Aug. 30	
Scheduled Drop-in (M-F)	5:30pm-8pm
(Pending No Leagues)	
Sept. 1 - May 30	
Gyms	
Drop-in Rec	9am-5:30pm
League Play & Rec Programs	5:30pm-10pm
Fitness Center Day Pass	6am-8pm

Special Events and/or programs are held throughout the year. Please consult the recreation program brochure and watch for flyers that adjust these listed hours or visit our website @ clintoniowa.recdesk.com

MEMBERSHIP FEE SCHEDULE

Fitness Membership - Weight Room, Gyms, Classes if available				
	Daily	Annual	Monthly	Monthly Auto-Deduct
Student (Ages 16/17)	\$4	\$162	\$22	\$15
Senior (age 55+)	\$4	\$162	\$22	\$15
Adult	\$5	\$216	\$27	\$20
2-Person		\$324	\$37	\$30
Family (6ppl)		\$432	\$47	\$40
Check out the programs we work with for Fitness Membership and the outdoor pool				
SILVER SNEAKERS: Seniors you may qualify for Silver Sneakers through your insurance. Go to https://www.silversneakers.com/ to see if you are eligible. You must be 65 years old or older. If you are supply your silver sneakers participant number to the recreation staff. Silver Sneakers allows seniors to attend fitness programs free of charge.				
Other insurance programs accepted: Tivity, Prime, Renew Active or Active & Fit. Call the number on the back of your insurance card to see if you qualify.				
Club Membership – access to the Clubs at The Rec - \$20 a year				
Jog and Walk	Monday-Friday	6am-9am		
Knitting and Crochet Club	Tuesdays	9am-11:30am		
Basic Membership - big and small gyms and youth room				
Student Ages 7-17	\$25 annually (daily \$4) (6 and younger free)			
Senior	\$25 annually (daily \$4)			
Adult 18+	\$50 annually (daily \$5)			
2- Person	\$75 annually			
Family	\$100 annually			
Daily Pass:	\$5			

FINANCIAL ASSISTANCE FOR YOUTH SPORTS

Financial assistants available for youth sports if child qualifies for free and reduced lunch.
Must provide letter from school for each school year.

What is The Rec Club Membership? With your \$20 annual pass, you have access to the Clubs at the Ericksen Community Center. If you are interested in adding a Club, please see the staff.

JOG AND WALK CLUB

WHO:	Men and Women
DAY & TIME:	Year Around 6am-9am
SITE:	Ericksen Community Center (lower level)
FEE:	ECC Club Membership \$20

KNITTING AND CROCHET CLUB

WHO:	Adults
LOCATION:	Ericksen Community Center, Room A
DATES:	Year round
DAY & TIME:	Tuesday, 9am-11:30 am
FEE:	ECC Club Membership \$20

RECREATION PROGRAM REGISTRATION INFORMATION	City Administrator.
1. You may register by mail or online at 1. https://clintoniowa.recdesk.com/Community/Home A mail-in registration form is available by request.	ACCOMMODATIONS
2. Telephone registrations are not accepted.	To make participation in programs/services more enjoyable, individuals with a disability requiring accommodations are requested to inform the Parks & Recreation Department at least 48 hours in advance, so that those accommodations requested can be ready for the individual for participation in their chosen activity.
3. Payment in full must accompany registration.	ACCIDENTS/INSURANCE
4. Senior citizens receive a discount off of adult rates. (not less than a youth fee in the same activity).	Individual, team or group accident insurance is not provided by the City of Clinton for participants in Parks & Recreation Department programs. We recommend that you check with your personal agent to assure coverage. Please report any injuries to department staff personnel.
5. For registration purposes, youth are up to 17 years of age, adults are 18 and over, & seniors age 55 and over.	Online Registration– https://clintoniowa.recdesk.com
DISCRIMINATION STATEMENT	Text the following codes to 563-500-1585 to stay up to date on info:
The City of Clinton in the provisions of employment, services and facilities, does not discriminate against anyone on the basis of race, color, sex, creed, national origin, age or disability. If anyone believes he or she has been subjected to such discrimination, he or she may file a complaint alleging discrimination with either the Office of Equal Opportunity, U.S. Department of Interior, Washington, D.C. 20240, or with the City Administrator who has been designated to coordinate compliance with the non-discrimination requirements contained in section 35.107 of the U.S. Department of Justice regulations. Information concerning the provisions of Title II of the Americans With Disabilities Act are available from the	Parks and Recreation general information PARKNREC
	Parks and Recreation Adult Sports PNRADSP
	Parks and Recreation Youth Sports PNRYTHSP

ONLINE REGISTRATION SYSTEM

The City of Clinton Parks and Recreation has launch a NEW online registration portal (RecDesk). This system will allow registered users to reserve park shelters and other facilities, as well as register for programs, memberships and classes as they are available. The online registration system includes a secure online payment portal. To set up your household account go to <http://clintoniowa.recdesk.com>. Start by creating the primary/head of household account. Then add your other household members.

RENTALS AT ERICKSEN COMMUNITY CENTER

Make the Ericksen Community Center your place for a special kids' birthday, scouts, class, or friend/family get together.

Community Room \$45/hr lower level mtg room, 70ppl
Small Gym \$30/hr, one small court
Youth Room \$45/hr , lower level mtg room 30ppl
Party Package A– Community Room and Small Gym \$60/hr
Party Package B– Commons Area and Big Gym \$80/hr
Entire Lower Level-\$125/hr

LOCATION: Ericksen Community Center
DAY & TIME: Call for availability
RESERVATION DEADLINE: Five business days notice

“HEY COACH” –COACHES WANTED

This is what a team of kids would call you if you volunteer to coach for a team. Teach the fundamentals of passing, dribbling, defense and shooting in a fun age-appropriate environment. Coaches will organize practices and set-up plays for their team. A coach's meeting will be held to hand out program materials and to explain the program. Coaches must fill out a Coach's Application and complete a background check, which are available online or at the Recreation Department Administrative Office.

ADULT VOLLEYBALL LEAGUE WINTER REGISTRATION 2025

Winter Due Date: Thurs. Jan. 2, by 5pm
Entries contain three items:
1. Minimum Roster **2. Team & Manager Info** **3.Entry Fees Paid** Only original rosters accepted no copies. All three items must be completed to establish entry order due to space limitations. Forms available at the Ericksen Community Center.

ENTRY FEE: Volleyball: **\$175**
\$25 late fee charged after deadline, if entry is accepted.

LEAGUE MEETING: **Winter:** Information will be emailed to managers Thursday Jan 9th, 2025. Agenda to include review of playing rules, administration of league play and preliminary schedule distribution.

SEASON: Playing nights & Divisions: Jan 20-March 27, 2025 (approx.)
Monday: Mixed Power Volleyball
Wednesday: Women's Power Volleyball
Thursday: Mixed Modified; Women's Modified

ROSTER ADMINISTRATION: Roster change deadline: **February 3rd.**
a. Rosters are frozen after the deadline listed above with two exceptions new citizens and team hardship. b. Players can only play on one team in each division: (Men's, Women's or Mixed). c. Any and all individual players must sign the originally submitted Team Roster. Note: The Parks & Recreation Department accepts registrations for teams only.

NOTE: Due to limited facilities, each league is limited to 6 teams (12 teams per night in volleyball).

ADULT BASKETBALL OPEN GYM

DAYS: Sunday Nights
TIME: 6-9pm
AGES: Adults 18 and older
FEE: \$3
Approx. Dates: Nov 3rd– April 6th
No Open Gym (Dec. 1, Dec. 22, 29 Feb. 9 Mar.16) **ADULTS ONLY**

GOALTIMATE

Dates:	Friday December 6 to Jan. 31	(No league 12/27)
Times:	6:30 pm	
Cost :	\$60 per team	3v3 roster of 5

SPRING YOUTH SOCCER

Come take part in one of the area's largest youth soccer programs. This program is designed to teach the fundamentals of soccer to participants ages 3 through 8th grade. Children will learn the fundamentals of soccer through practices and games through instruction by volunteer coaches. Games consist of smaller sided play to ensure more quality touches of the ball during games. Roster sizes will vary depending on number of registrations for each league. There are 9 leagues available including Preschool (co-ed), K-1st Grade Boys,K-1st Grade Girls, 2-3rd Grade Boys, 2-3rd Grade Girls, 4-5th Grade Boys, 4-5th Grade Girls, 6-7-8th Grade Boys and 6-7-8th Grade Girls. Participants are registered by the school they attend.

LOCATION: Jurgensen Soccer Complex - Clinton, IA
Possible Games in DeWitt, IA (4th/5th Grade and Middle School)
DAYS: Saturday and some Tuesday's/Thursday (Pre-K, K-1 and 2/3)
GAME DATES week of: April 12, 19 & 26 and May 3, 10 and 17th
AGES: 3 years old through 8th grade (2024-2025 school year)
NOTIFICATION: After coaches meeting (March 20th)
Registration Period: Now through March 6th
Participant Fee: \$48 Financial Assistance: \$30
Late Registration will be accepted from March 6th-March 13th Participant Fee: \$55 *IF AVAILABLE*
***Requests will be limited *Parents/Guardians will fill out a Player Evaluation to help with team assembly**

1. Beginner	2. Intermediate	3. Advanced
--------------------	------------------------	--------------------

THANK YOU TO OUR YOUTH SPORTS SPONSORS:

Pepsi Distributing	Dependable Drain	Today's Dental
Kara Howe/State Farm	Hy-Vee	Classic Body Works
Adcraft	Rivals Sports	American Family Ins.
Aegis	Custom Pak	Pizza Hut
River City Fence	Leslie Electric	Beckwith Roofing
Clover Hills	Clinton Back and Neck	Sweetheart Bakery & Homer's Deli
Scooter's Coffee	Pest Control Consultants	First Central State Bank

NON-TACKLE FLAG FOOTBALL

Instruction in non-tackle flag football for 1st, 2nd, 3rd & 4th grades. Volunteer coaches will show youngsters an assortment of warm-ups, drills and plays needed to acquire basic football skills. T-shirts will be given to all players and coaches. Teams will consist of 7 players on the field at one time with minimum playing rules. Children registered by school attended.

WHO:	Grades 1st/2nd – 3rd/4th Boys and Girls	
LOCATION:	Emma Young Park – softball fields	
DATE:	September 22 – October 27	
DAYS:	Sunday Early Afternoons, some week nights & other days for practice as scheduled	
TIMES:	Practices: 1-1/2 hour dependent upon coaches availability.	
Registration Period:	Now thru Aug 15	
Participant Fee:	\$48 Financial Assistance Fee: \$30	
Late Registration thru Aug 28 (Only if availability permits)	Late Fee: additional \$7	
LIMIT:	24 minimum; with 14 team maximum 7+ Players/team	
	*Request will be limited	
*Parents/Guardians will fill out a Player Evaluation to help with team assembly		
1. Beginner	2. Intermediate	3. Advanced

YOUTH BASKETBALL 1ST THRU 6TH GRADE

Join us for this 6 week youth basketball program featuring league play. Players will be grouped together based on their school attendance center. Volunteer coaches will instruct players with fundamentals, skills and plays through practices, followed by 6 weeks of live game play. Game officials will be provided. Team shirts will be provided to both coaches and players.

1st and 2nd Grade League:	Boys and Girls play separately. Game day—Sunday. Games start Sunday, Feb 2nd and end Sunday, March 9th
3rd and 4th Grade League:	Boys and Girls play separately. Games on Saturday mornings and occasionally on Friday evenings. Games start Saturday, Feb 1st and end March 8th.
5th and 6th Grade League:	Boys and Girls play separately. Games on Saturday and occasionally on Friday evenings. Games start Saturday, Feb 1st and end March 8th.

PRACTICE SITES: Local Elementary School Gyms and Ericksen Community Center. (Rural community teams may practice in their hometown gyms, but must abide by the practice allowance per week rule of once or twice a week.
GAME SITE: Ericksen Community Center, Clinton Middle School & Eagle Heights Elementary School
GAME: 6 game program. Days listed above- Saturday, Sunday's
LIMIT: 4 team minimum required. No more than 10 players per team per school.
TEAM FORMATION BASED ON: School attendance center in Clinton, Camanche, Fulton, Northeast, Preston, Miles, DeWitt, etc. Note: Selection criteria are subject to change based on number of registrations. After the registration deadline, players will be placed on teams at the discretion of the Recreation Department as availability permits.
COACHES MEETING: January 9th 5:30pm– lower level Community Room
PLAYERS CONTACTED BY COACH: After January 9th
FIRST PRACTICE: Week of January 13th, 2025
REGISTRATION PERIOD: Now thru Jan. 2nd
Fee: \$48
FINANCIAL ASSISTANCE: \$30
LATE REGISTRATION: (Only if availability Jan.3 - Jan.7) **Fee:** \$55

KINDERBALL BASKETBALL LEAGUE

Game site: Ericksen Community Center– Small Gym
Game Day: Saturdays
Limit: 4 team minimum required. No more than 6 player per team per school (max 72)
Team Selection: Register by school site
Note: After the registration deadline, players will be placed on teams at the discretion of the Recreation Department as availability permits
Age: In Kindergarten
Coaches Meeting: January 23th at 5:30pm.
Players Contacted by Coach: After Jan 23
First Game: Co-ed Saturday Afternoons Feb 8
Last Game: March 8
Registration Period: now thru January 9th, 2025 Fee: \$40
Financial Assistance: \$24
Late Registration- If available: \$47

DODGEBALL NIGHT

For youngsters who can't get enough Dodgeball! Come as a team of five players and get ready for two hours of active play. 2 Divisions—4th & 5th grade. 6th - 8th Grade.
Teams may register on that night, or phone the recreation office at 563-243-1260. Prizes As Well.
WHO: Everyone is welcome 4th-8th grade
LOCATION: Ericksen Community Center, GYM
DATE: November 2, 2024, December 7, 2024
TIME: 6 pm to 8 pm
FEE: \$5 Per Person
LIMIT: 3 Teams Minimum; 8 Teams Maximum
REGISTRATION: At the door beginning at 5:30

FRIDAY FUN NIGHTS

Upper elementary school students here's your chance to hang out with friends at the “REC”. Concession Stand available for refreshments. Activities included but not limited to kickball, basketball, a movie, dodgeball, volleyball, and soccer. Parents are welcomed to stop in during this activity. This event is a lock-in, once you come in, you stay until close, unless a parent or guardian enters the building to pick you up. Supervision by department staff and volunteers will be provided.
WHO: Elementary School Youth, Grades 3, 4 & 5
LOCATION: Ericksen Community Center, Lower Level
DATES: Friday 5:30 to 8:30 pm Oct. 25,2024 & **Feb. 21, 2025**
FEE: \$5 Pay at Door

MARIO KART

For youngsters ages 7-11 who can't get enough Mario Kart! Pre-register online to secure your spot. Walk in sign ups will be based on available spots the day of on a first come first serve basis. Players are encouraged to register online At clintoniowa.recdesk.com. Prizes As Well.
WHO: Everyone is welcome Ages 7-11
LOCATION: Ericksen Community Center, Youth Room
DATE: December 20, 2024
TIME: 5 pm to 8 pm
FEE: \$5 Per Person
LIMIT: 6 Minimum; 12 Maximum
REGISTRATION: Online OR at the door beginning at 4:45pm

DOG PROGRAMS

DOG INSTRUCTOR: Judy May
LOCATION: Riverview Pool Bathhouse & Nature Barn
Register: Ericksen Community Center– 1401 11th Ave N, Clinton, IA 52732 563-243-1260. Each class will require a minimum number to be registered. Once the maximum is met, class is closed even if it has not reached the registration deadline. A soft light-weight nylon buckle collar and 6' leash are required. Any breed of dog will be accepted provided they have proof of distemper, kennel cough (12 wks.), rabies (4 mos.) and parvo shots. Must be presented at time of registration (marked receipt from vet)
Registration Deadlines: March 26
Class Dates: March 29-May 10 (no class April 19)

DOG AGILITY TRAINING AT RIVERVIEW POOL BATHHOUSE

This course gives dogs exposure to jumps, contact obstacle, weave poles, and the basics of canine agility. All breeds of non-threatening dogs allowed, AKC certification not required. Owners must provide a leather or nylon leash and collar.
PREREQUISITES: Dogs must be 6 months old minimum. Handler must show proof of successful completion in a dog obedience class prior to participation.
LIMIT: 5 minimum, 8 maximum
DAY & TIME: Saturdays 2:30pm-3:30pm
FEE: \$40 (Late fee \$47 if space available)

PUPPY AND DOG OBEDIENCE AT RIVERVIEW POOL BATHHOUSE

Now a combined class for puppies at least twelve (12) weeks of age and all ages of dogs. This class is designed to introduce you and your dog to collar and leash, to endure handling and to obey simple commands. Also, helpful hints on grooming, housebreaking, gnawing and chewing. This class is designed to help you learn how to train your dog; being consistent with your commands, knowing what verbal commands and the hand signals to give your dog. The canine good citizenship test will be taken during the final class. Recommended that the same person should handle the dog at each session.
LIMIT: 6 minimum; 10 maximum
DAY & TIME: Saturdays 1pm-2pm
FEE: \$40 (Late fee \$47 if space available)

CLINTON MARINA

The Clinton Marina office is closed from mid-December to February 1, but we will return phone messages, emails, and FB questions on a timely basis once received. All payments may be sent to or dropped off at the Ericksen Community Center during their regular business hours. If you're looking for a slip for the 2025 season (which begins April 1), please reach out to be placed on our waiting list. Slip placement will start in approximately the third week of February. Messages can be left at: 563-242-3600, by email at: marina@cityofclintoniowa.gov or FB message us on our 'Clinton Marina' Facebook page.
An on-site Boat Mechanic, Tyler Jensen, offers an array of services from winterization and wrapping to full-service mechanical needs, stereo/sound systems, custom detailing; seat, carpet, and canvas repair. He can be reached at 563-249-7341.

CAMPGROUNDS

The Clinton RV Campground's 'off season' rate from mid-to-late October to April 15 (weather dependent) fee is \$15 a night. There is no time limit on the stay at your camp site and no weekly/monthly discounts once the water is turned off. The bathrooms are closed and there is only ONE water source in the inner circle. Best pads to use for the water source are camp pads 28 or 5. Please fill your unit and unhook to prevent frost/freezing (we WILL remove any hoses left hooked up). The dump station is available for use, however, no running water to rinse your units out. You'll find the payment envelopes in the black mailbox on the side of the washhouse as well as the black payment box to drop your payment into. For specific information, please contact the Clinton Marina office at 563-242-3600 to leave a message and we'll get back to you as soon as possible. Or, for general questions, contact the Ericksen Community Center at 563-243-1260.

RENTALS

PARK AREAS TO RENT (April 30 - Oct 15)

Eagle Point Castle: \$40/day, 30ppl, parking at South Shelter
Eagle Point Maple Grove: \$15/day, open space, no services
Eagle Point Waterfall: \$40/day, no vehicles on circle drive, 30ppl
Gazebo Neubauer Park: \$15/day, no services, 30ppl
Lubbers Fountain: \$40/day, 30ppl max, parking on street
Pond Pier - Emma Young Park: \$40/day, electricity
Shelter - Chancy Park: \$25/day, 55x32, 12 tables, no electricity, no bathrooms, 54ppl
Shelter - Clinton Park: \$40/day, electricity, 12ppl
Shelter - Eagle Point – North: \$25/day. 56x32, 27 tables, no electricity, bathrooms nearby, 162ppl
Shelter - Eagle Point – Central: \$40/day, 34x25, 8 tables, no electricity, no bathrooms, 48ppl
Shelter - Eagle Point – South: \$40/day, 22x20, 6 tables, electricity and bathroom, 36ppl
Shelter - Rotary Park: \$40/day, bathrooms, 75ppl

ATHLETIC SPACES

Clinton Park Basketball Courts: \$15/hr complex max \$50 a day
Cross Country Course – Emma Young: \$100 a day, no services
Emma Young Softball Diamond: \$75/day/diamond, lights \$15/hr/diamond, 3 hr game/scrimmage fee \$50
Hawthorne Horseshoe Pits: \$15/hr complex max \$50 a day
Jurgenson Soccer Field: call for pricing
Mayer Park Softball Diamonds: \$15/hr complex max \$50 a day
Riverview Pickleball Courts: \$50/hr/complex max \$200 a day
Riverview Sand Volleyball Courts: \$15/hr complex max \$50 a day

OUTDOOR FACILITIES

Lyons Four Square Bandshell: \$40 includes electricity, no bathroom
Riverview Park Bandshell: with electricity/water, bathroom 4/30-10/15
Bandshell Only \$100/day
Bandshell and grounds electricity: \$150/day
Bandshell, grounds and towers w/sound equipment: \$250/day
Lyons Pavilion: \$150 with electricity/water 4/30-10/15 (farmers' market), street closure required.

EAGLE POINT LODGE

299 ppl max, \$50/hr M-Th and \$75/hr F, Sat, Sun and Holidays, deposit required. 3 hour min. For availability, choose Lodge at https://clintoniowa.recdesk.com

ERICKSEN COMMUNITY CENTER

Big Gym: \$50/hr whole gym \$30/hr 1/2 gym, one high school court, 2 smaller courts, bleachers, next to concession stand.
Club Room: \$25/hr, upstairs mtg room, 8ppl
Commons Area: \$45/hr
Community Room: \$45/hr lower level mtg room, 70ppl
Small Gym: \$30/hr, one small court
Youth Room: \$45/hr, lower level mtg room 30ppl
Party Package A: Community Room and Small Gym \$60/hr
Party Package B: Commons Area and Big Gym \$80/hr
Entire Lower Level: \$125/hr

MOVIE SCREENS

Outdoor Screen: \$350 call SWANK 1-800-876-5577 to reserve rights to movie. (Must have proof). 25 miles from The Rec.
May 1 - Sept 30 – 30'x20', blow up screen total size 35x25x16
Indoor Screen: \$250 SWANK info required, year around. 25 miles from The Rec.

TEXT THE FOLLOWING CODES TO 563-500-1585 TO STAY UP TO DATE ON INFO:

Parks & Recreation General Information: **PARKNREC**
Parks & Recreation Adult Sports: **PNRADSP**
Parks & Recreation Youth Sports: **PNRYTHSP**

PARKS & RECREATION STAFF

Josh Eggers - Director
Cathy Marx - Assistant Director
Brandon Haines - Program Spvr.
Pat McGarry - Parks Spvr.
David Orte - Program Mngr.
Nancy Houzenga - Admin Assist.
Sheri Loeffelholz - Office Mngr.
Dustin Krogman - Grounds/Turf
Jean LaShelle - Marina/Campground
Tyler Hines - Groundskeeper

JoshuaEggers@cityofclintoniowa.gov
CathyMarx@cityofclintoniowa.gov
BHaines@cityofclintoniowa.gov
PatMcGarry@cityofclintoniowa.gov
DOrte@cityofclintoniowa.gov
NHouzenga@cityofclintoniowa.gov
Sloeffelholz@cityofclintoniowa.gov
DKrogman@cityofclintoniowa.gov
JLaShelle@cityofclintoniowa.gov
Thines@cityofclintoniowa.gov

CLINTON PUBLIC LIBRARY

CLINTON PUBLIC LIBRARY | 306 8TH AVENUE SOUTH | CLINTON, IA 52732 | 563-242-8441 | WWW.CLINTONPUBLICLIBRARY.US

THE CLINTON PUBLIC LIBRARY ASPIRES TO BE AN ACCESSIBLE RESOURCE FOR OUR COMMUNITY WHERE ALL CAN DISCOVER, LEARN, CREATE, CONNECT, AND GROW.

THE MISSION OF THE CLINTON PUBLIC LIBRARY IS TO PROVIDE A WELCOMING AND INCLUSIVE ENVIRONMENT, OFFER PROGRAMS AND SERVICES TO BENEFIT ALL AGES, AND CONNECT PEOPLE TO RESOURCES WITH THE GOAL OF ENRICHING OUR DIVERSE COMMUNITY.

Clinton Public Library is a department of the City of Clinton and offers a full range of services, programs and materials!

We offer: Faxing, Scanning, Printing, Public notary, 3D Printing, Cricut, Bookbinding, Button making, Lamination, Cake pans, Cookie cutters, Free Computer use &more!

Stay up to date and visit us online:
WWW.CLINTONPUBLICLIBRARY.US

Follow Us on Facebook and Instagram: @IACPL

Sign up to receive the library's monthly e-newsletter!

Something is *always* going on at the Clinton Public Library! Subscribe to our e-newsletter to be the first to receive the latest news about upcoming programs, services, resources, and more!

<https://clintonpubliclibrary.us/programs-and-events/newsletter>

CLINTON PUBLIC LIBRARY	
Main Branch 306 8th Avenue South 563-242-8441	
MONDAY - THURSDAY	9:00 AM - 7:00 PM
FRIDAY	10:00 AM - 5:00 PM
SATURDAY	10:00 AM - 5:00 PM

CLINTON PUBLIC LIBRARY WILL BE CLOSED:

November 11th: Staff Development

Closing at 5 p.m. on Wednesday, **Nov. 27th** through Saturday, **Nov 30th** in observance of Thanksgiving

Closing at 5 p.m. on Monday, **Dec. 23rd** through Wednesday, **Dec 25th** in observance of Christmas

Closed Tuesday, **Dec. 31st** – Wednesday, **Jan. 1st** in observance of the New Year

THE CLINTON PUBLIC LIBRARY IS CELEBRATING ITS 120-YEAR ANNIVERSARY THIS NOVEMBER!

Happy Birthday, Clinton Public Library!

Saturday, November 9 | 10:30am – 12:30pm | Children's Department

Get ready for a day filled with fun, activities, and adventure! We're throwing a fantastic 120th birthday party at the library, and you're invited! Bring your friends and your love for reading as we celebrate another wonderful year of adventures at the library. We can't wait to celebrate with you!

WHAT TO EXPECT:

- Fun & Games: Join in on some delightful games and activities that will make you smile!
- Craft Corner: Create your own bookmarks and other craft projects to take home.
- Treasure Hunt: Embark on a fun scavenger hunt throughout the Children's Department!
- Delicious Treats: Enjoy some yummy treats to celebrate the special day!

Clinton Public Library Open House

Saturday, November 16 | 12:00pm - 4:00pm | Main Floor

Visit the library to learn about its services, resources, and programs. Library staff members will be available to give interested individuals library tours.

The History of the Clinton Public Library: The First 120 Years

Saturday, November 16 | 2:30pm - 3:30pm | Multipurpose Room

Come join us to celebrate the history of your Clinton Public Library. Philanthropist Andrew Carnegie provided funds for over 2,500 public libraries worldwide, one of which is right here in Clinton. Learn the story of this beautiful building and how our Clinton library has evolved today. Dave Bahnsen will present The History of the Clinton Public Library: The First 120 Years. Registration is encouraged, please call (563) 242-5355 or register through our online calendar.

120 Minute Party: Celebrating 120 Years!

Thursday, November 21 | 5:30pm - 7:30pm | Main Floor

Celebrate 120 years of the Clinton Public Library.
Visit the library's website for more information.

CLINTON READING CHALLENGE GRAND CHAMPION 2024

146 Clinton, Iowa readers read a total of 18,690 hours this summer to win the Clinton Reading Challenge. Clinton, Iowa readers competed with "Clinton" libraries in New York, New Jersey, Pennsylvania, and Massachusetts to see which library could read the most over fourteen weeks. This is the most participation the library has ever had in an adult summer reading program. Congratulations to all participants!

ADULT LIBRARY PROGRAMS:

#52Stories

Oct. 5, Nov. 2, Dec. 7, Jan. 4 | 1:30pm - 3:00pm | Clinton Public Library

On every headstone or plaque, there are two dates separated by a dash. How do you define your dash? The #52Stories genealogy project provides the inspiration you need to write down one story every week for a year by using a handwritten journal, blog, voice, or video recording. During this meeting we will chat about what we are doing with our own #52Stories project by sharing our stories & photos. Registration is encouraged, please call (563) 242-5355 or register through our online calendar.

The Plarn Project

Will resume Saturday, January 18 | 1:00pm - 2:00pm | Clinton Public Library

Plarn is plastic yarn that is made from plastic shopping bags. This material is used by local volunteers to make comfortable sleeping mats for the homeless. Upcycling these plastic bags is a way to help our community and also reduce the amount of plastic going into landfills. If you are interested in donating clean plastic grocery bags & cutting them, please join us to learn more about this project. This program will be held the 3rd Saturday of the month unless otherwise noted. Registration is encouraged, please call (563) 242-5355 or register through our online calendar.

Lyons Reads Book Club

Will resume Saturday, January 25 | 10:30am - Noon | Clinton Public Library

his book club is relaxed and we have fun conversations about books and authors. We each read our own book and discuss it with our group. Registration is encouraged, please call (563) 242-5355, or register through our online calendar.

Device Advice

Nov 22, Dec 27, Jan 24, and Feb 24 | 10:00am - 12:00pm | Clinton Public Library

Technology giving you trouble? Drop into the library for one-on-one help during Device Advice hours! We're happy to help with any projects you're working on or just answer your questions. We're not tech professionals, but we can help you feel more comfortable navigating the technology you are interested in.

TEEN PROGRAMS:

Teen Video Game Night

Monday, Dec 2 and Jan 6 | 4:30pm - 6:00pm | Clinton Public Library

This program is Free! Bring your Joy-Con and compete on our Switch. Just Dance with the Wii. Play it old school with Guitar Hero on the PS2. This program will be held the 1st Monday unless otherwise noted. Snacks provided. Registration encouraged, but not required.

FAMILY PROGRAMS:

Puzzle Exchange!

Drop Off: Tuesday, November 12 – Saturday, November 16

Pick-Up: Wednesday, November 20 - Saturday, November 23 | Clinton Public Library

Swap your old jigsaw puzzles for gently-used ones through the Clinton Public Library's puzzle exchange! Here's how it works:

1. Bring in a gently used jigsaw puzzle —with all of its pieces, please— to the Main Branch from Tuesday, Nov. 12 through Saturday, Nov. 16 during open hours. Library staff will give you a ticket to get a "new" puzzle the following week. Participants will get one ticket for every puzzle they drop off.
2. Present your ticket(s) and choose a new-to-you puzzle(s) at the Main Branch from Wednesday, Nov. 20 – Saturday, Nov. 23 any time during open hours. Puzzle selection will be on a first come, first serve basis.
3. The best part: Begin your new-to-you jigsaw puzzle!

Questions? Call the Main Branch at (563) 242-8411 or email Kate at kstruble@clintonpubliclibrary.us

Santa Storytime

Wednesday, Dec. 4 | 10:30am - 11:30am | Clinton Public Library

Join us for a Santa themed story time! We'll read stories, sing songs, and make a craft together. This program is for Pre-K kids.

YOUTH DEPARTMENT:

Wiggle Time!

Tuesdays | 10:30am | Clinton Public Library

Join us for Wiggle Time! We will have songs, toys, and bubbles for you and your baby or toddler to interact. This is a great chance for kids and caregivers to socialize with each other and their peers. This program is for kids ages 0-3.

Storytime

Wednesdays & First Saturdays | 10:30am | Clinton Public Library

Join us for fun, stories, songs, puppet shows, and a craft to take home! This program is for Pre-K kids.

YOUTH DEPARTMENT CONTINUED:

Creative Explorers

Wednesdays | 3:00pm | Clinton Public Library

Join us for an afternoon of play and learning! The Creative Explorers (formerly Afternoon Adventures) program offers a space for children to create, explore, and discover. Through fun and interactive programs, we aim to provide patrons of all abilities and stages of learning with the opportunity to learn about the world around them in a hands-on way. Caregivers are encouraged to stay in the building and participate with their children. Children under the age of 8 are not to be left alone in the building without a caretaker at least 14 years of age.

Makerspace

Thursday, Nov. 14 and Dec. 12 | 3:30pm - 7:00pm | Makerspace, 2nd Floor

What is a Makerspace? Simply put, makerspaces are places where people can go to make things and collaborate on projects. Everyone can be a maker and the things created in a makerspace can vary a great deal. Our Makerspace has a variety of offerings, ranging from low tech to high tech. We invite makers of all types and skill levels to come learn, imagine, and create. Tools and materials available:

- 3D Printer
 - 3Doodler Pens
 - Makey Makey
 - Button Makers
 - Ellison & Sizzix Die Cutters
 - Cricut Maker 3
 - Cricut Easy Press
 - Heat Press
 - Laminators (desktop & poster sizes)
 - Brother Embroidery Machine
- Brother Sewing Machines
 - Coil & Comb Binding Machines
 - Fiber Arts (crochet, knitting, cross stitch)

COMING SOON:

- Epson Sublimation Printer
- Sublimation Oven
- Silhouette Cameo 4 Pro
- HP Large Format Printer
- Wood Burning Kit

Makerspace hours are subject to change, based on staff availability. To make sure a time is available for you, or to make an appointment, please give us a call at (563) 242-8441 or email us at cplmakerspace@gmail.com.

Makerspace Open House

Thursday, November 21 | 5:30pm - 7:30pm | Makerspace, 2nd Floor

Check out what's in the Makerspace during the library's 120 Minute Party: Celebrating 120 Years!

Make it @ The Library

Thursday, December 19 | Makerspace, 2nd Floor

3rd Thursdays of the month: Jan 16, Feb 20, and March 20

Youth Session: (Ages 10-14): 4:00 – 5:00 p.m.

Adult Session: 5:30 – 6:30 p.m.

Do you have a passion for learning and creating? This workshop offers a welcoming environment to learn and practice a variety of skills and techniques for makers of all skills and abilities. There is no one kind of maker—a maker is anyone who is curious and a creative thinker. Make It @ Your Library encourages opportunities for hands-on learning, designing, exchanging ideas, and collaboration. In this workshop, makers will:

- Get more comfortable with the idea of making
- Learn to be creators, not just consumers
- Gain the skills and confidence needed to complete independent projects
- Get exposure to different types of projects and equipment, such as 3D printers, cutting machines, heat press, sublimation, sewing & embroidery, and more!
- Learn how to bring your ideas to life.

This workshop is will be held the 3rd Thursday of the month. **Supplies are limited so registration is encouraged.** Register through the online calendar on the library's website.

FUTURE PROGRAMS

Sewing Basics and Sewing Basics: Youth Edition

Registration for the next session opens in early December through the library's website.

Thursday, January 2, February 6, March 6, and April 3

Youth Session Time: 4 – 5 p.m. (Ages 10-14)

Adult Session Time: 5:30 – 6:30 p.m.

Have you ever wanted to learn how to sew? Have your sewing skills gotten a little rusty over the years? Sign up for a series of beginner level workshops where you can learn to sew, or refresh your skills, alongside our Makerspace staff. You will be guided through the basics, from learning sewing machine parts and essential tools to mending, sewing simple projects, and much more! The Sewing Basics workshop includes 4 sessions, each held on the 1st Thursday of the month.

Registration is always required.

MARKET MUSIC

THANK YOU FOR A GREAT 2024 @ LYONS FOUR SQUARE PARK

WITH SPECIAL THANKS TO OUR GENEROUS SPONSORS











563-242-8441 CLINTONPUBLICLIBRARY.US @IACPL

Aerial Christmas Light Tours

TAKE A PRIVATE FLIGHT OVER CHRISTMAS LIGHT DISPLAYS INCLUDING THE SYMPHONY OF LIGHTS




SCHEDULE YOUR FLIGHT TODAY BY CALLING FLIGHT DECK AVIATION 563-215-9170


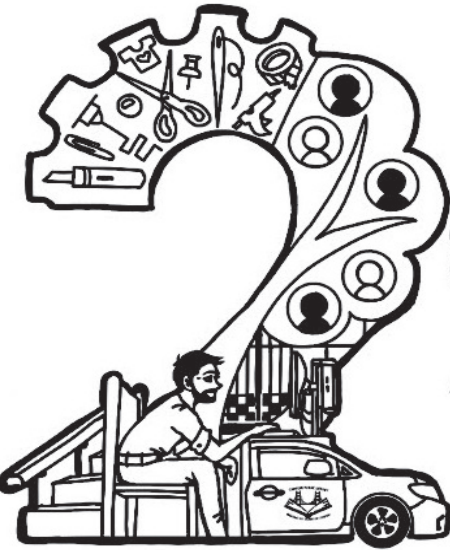

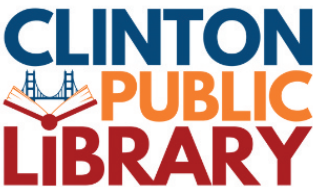
SPOTS FILL UP FAST AND SELL OUT QUICKLY AVAILABLE FOR UP TO 3 PEOPLE

We're celebrating

CLINTONPUBLICLIBRARY.US



JOIN THE PARTY!



years of service...

CLINTON FIRE DEPARTMENT

CLINTON FIRE DEPARTMENT ORDERS
NEW ENGINE 55 FOR LYONS STATION

The Clinton Fire Department has taken a significant step toward enhancing its emergency response capabilities by placing an order for a brand new custom-built fire engine. The new engine, named Engine 55, will be manufactured by Pierce Manufacturing at their Bradenton, Florida facility and is expected to be delivered in early 2026.

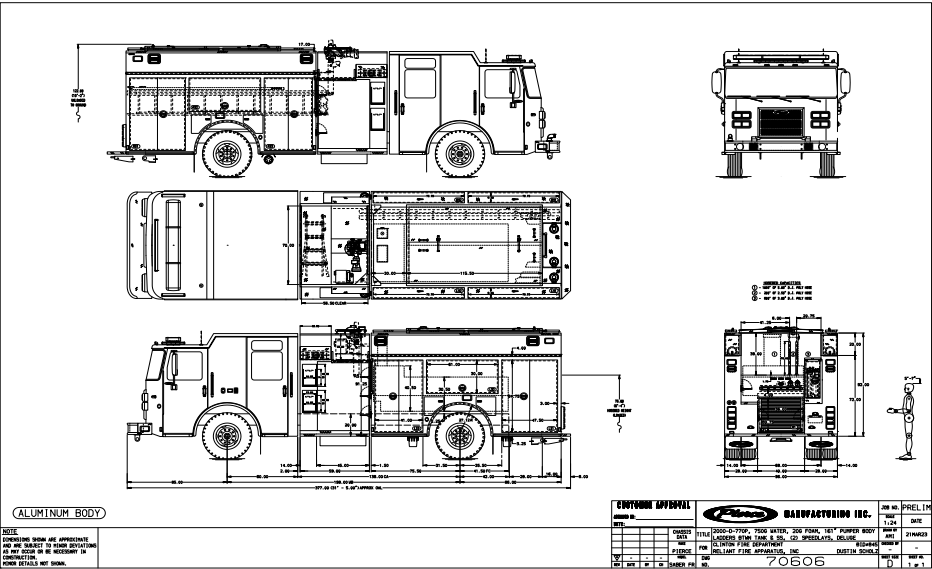
Engine 55 will be stationed at the newly revamped Lyons Fire Station, continuing the department's commitment to providing cutting-edge resources for the community. The order was placed in March 2023, with a lead time of approximately 20.5 to 22.5 months, making its estimated completion date around January 2026.

Before being put into service, Pierce Manufacturing will provide specialized training to ensure department personnel are fully equipped to operate the new engine. Engine 55 boasts a variety of modern capabilities designed to enhance firefighting efficiency and safety:

- **2,000 gallons per minute pump capacity**, allowing for swift water delivery during firefighting operations.
- **1,000 feet of large diameter hose**, ensuring an extensive water supply for major incidents.
- **1,000 feet of attack hose**, providing flexibility with various hose lengths to tackle fires from different angles.
- **Short wheelbase**, improving maneuverability in tight spaces and urban environments.
- **Remote-controlled telescoping deck gun**, which enhances the effectiveness of initial operations by quickly delivering water to the fire scene.
- **Heated and cooled EMS compartment**, ensuring all advanced life support equipment remains functional and accessible in any weather conditions.
- **Lower rear hose bed**, reducing deployment time while minimizing the risk of injuries to firefighters.

The addition of Engine 55 to the fleet represents a significant investment in the safety of the Clinton community and underscores the City's and department's commitment to adopting innovative technology and equipment. This new engine will allow firefighters to respond more efficiently to emergencies, protect lives, and safeguard property.

Stay tuned for more updates as Engine 55's production progresses!



SHARING

OUR

SUCCESS

THANK YOU MEMBERS!

\$400,000.00

BONUS DIVIDENDS & LOAN INTEREST REBATES

WILL BE PAID TO 1ST GATEWAY CREDIT UNION MEMBERS ON
DIVIDENDS EARNED ON DEPOSITS AND LOAN INTEREST PAID ON
ACCOUNTS IN GOOD STANDING AS OF DECEMBER 31, 2024.

BUILDING & NEIGHBORHOOD SERVICES

ALWAYS BUY A UL OR ETL LISTED SMOKE AND CARBON MONOXIDE ALARM

We here at Building & Neighborhood Services are asking the public to look twice when purchasing smoke and carbon monoxide alarms, especially when buying online. Always look for a mark confirming that your alarm is listed by a nationally recognized testing laboratory such as Underwriters Laboratories (UL) or Intertek ETL and choose alarms from a well-known national brand.

During recent rental inspections, Code Enforcement Officials have identified multiple alarms with counterfeit marks or no markings at all during separate residential inspections. The alarms had been purchased through online retailers. It's important every residence have working smoke and carbon monoxide alarms,

and it's equally important those alarms be reliable. Alarms that aren't tested by an independent laboratory may not protect you when you need them most.

The City of Clinton, Code of Ordinances, Fire Safety Requirements, Chapter 152.02 require all rentals within the City of Clinton have smoke alarms and carbon monoxide alarms installed and also requires all alarms be listed by a nationally recognized testing laboratory. Currently, only Underwriters Laboratories (UL) and Intertek Testing Services NA, Inc. (Intertek) are permitted to test and list smoke and/or CO alarms in the United States. The thorough review processes these laboratories use helps ensure alarms will accurately detect hazards,

alert the consumer promptly, and perform other critical functions. Code Enforcement Officials have found counterfeit alarms purchased online that do not detect hazards as advertised. When purchasing a smoke or carbon monoxide alarm always look for the logo on the packaging and/or back side of the device.

Always choose alarms from a well-known national brand, we count on smoke and CO alarms to alert us to life-threatening danger. It may be cheaper to buy an alarm sight unseen online, but if the price seems too good to be true then it probably is.

In addition to choosing listed smoke and carbon monoxide alarms from a reputable brand, residents should also know when to replace

them. Smoke alarms and most combination smoke/CO alarms should be replaced after 10 years. Most carbon monoxide alarms should be replaced after five to seven years, depending on the make and model, or when the end-of-life signal activates.

Just like batteries, smoke and CO alarms don't last forever; if your alarm takes batteries, replace the batteries at least once a year. When it's time to buy a replacement alarm, current codes require you install a smoke alarm that has a sealed, tamper proof, nonremovable battery; you won't have to worry about changing the battery for the life of the device. Remember to test your alarms once a month to be sure they're working properly.

BUILDING DEPARTMENT / BNS - WHO WE ARE

With the adoption of the State Building Code, the building department for the City of Clinton was born. Now named Building and Neighborhood Services (BNS), the building department, a division of the Clinton Fire Department, is located at the Central Fire Station, 344 3rd Avenue South. As a partner within the community, BNS is a valued asset by being flexible, resourceful and aiding in the facilitation of safe and compliant solutions. In service to the public, BNS sees problems as opportunities and works diligently to identify and reduce all types of risk. The purpose of BNS is to ensure the safety, health and general welfare of the community through the education, administration and enforcement of the minimum codes and standards adopted by the City of Clinton and State of Iowa. By providing code-related education regarding requirements, processes and procedures, BNS helps equip customers with the knowledge needed for the successful completion of projects. Since the code requirements are dynamic and update periodically, the educational component is one of the most important responsibilities of BNS. Through code administration, BNS fulfills its purpose by ensuring that all work is approved and completed in an acceptable manner. During the permitting process, plans are

received and reviewed, and after potential corrections are made, a permit is issued. A permit is a legal document that grants permission for the approved work to begin. Enforcement of the code requires Building and Neighborhood Services staff to conduct a variety of different inspections in residential dwellings, commercial businesses, industrial facilities and rental properties. Inspections are conducted to ensure that the work being completed meets the approved requirements, and if deficiencies are discovered during an inspection, the inspector will work with the individual to assist in reaching compliance. Voluntarily compliance is the simplest and preferred enforcement practice. Once compliance is reached, and the building passes a final inspection, a Certificate of Occupancy is issued. A Certificate of Occupancy is a document that verifies a building or structure is legally safe to occupy.

If you have any questions about the codes or code-related processes and procedures, please reach out to Building and Neighborhood Services, Monday through Friday, 8:00am to 4:30pm.



CLINTON'S PREMIER
AFFORDABLE SENIOR HOUSING

COTTAGE BLUFF APARTMENTS

BRAND NEW CONSTRUCTION
2 BEDROOM FLOOR PLANS
55+ HOUSING



TO BE ELIGIBLE, YOUR GROSS ANNUAL INCOME MUST FALL BELOW THE FOLLOWING INCOME LIMITS:

1 PERSON: \$48,560
2 PERSON: \$55,520

SELECT MARKET-RATE UNITS AVAILABLE TO THOSE ABOVE THE INCOME LIMIT.

CONTACT US TODAY!
(862) 429-4567
WWW.COTTAGEBLUFFCLINTON.COM
907 IKES PEAK RD. CLINTON, IA

WASHINGTON SENIOR APARTMENTS

RECENTLY RENOVATED
STUDIO, 1 & 2 BEDROOMS
55+ HOUSING



TO BE ELIGIBLE, YOUR GROSS ANNUAL INCOME MUST FALL BELOW THE FOLLOWING INCOME LIMITS:

1 PERSON: \$36,420
2 PERSON: \$41,640

CONTACT US TODAY!
(563) 559-2620
WWW.WASHINGTONSENIORAPARTMENTS.COM
751 2ND AVE. S CLINTON, IA



BIG RIVER CANINE COACH

2740 S 17TH STREET • CLINTON, IA 52732

WWW.BIGRIVERCANINECOACH.COM • 563-243-0504



Clinton Iowa's Own KROS
FM 105.9 & AM 1340
Real, Reliable, Radio

**Follow us on our website at
krosradio.com for
local news • weather • sports
events schedule • programs
and community activities.
Like and Share our
Facebook Page**

CLINTON POLICE DEPARTMENT

PROTECT YOURSELF WITH THESE TIPS AND FACTS

Elder Fraud

Each year, millions of elderly Americans fall victim to some type of financial fraud or confidence scheme, including romance, lottery, and sweepstakes scams—just to name a few.

Criminals will gain their targets’ trust and may communicate with them directly online, over the phone, and/or through the mail; or indirectly through the TV and radio. Once successful, scammers often keep a scheme going because of the prospect of significant financial gain.

Seniors are often targeted because they tend to be trusting and polite. They also usually have financial savings, own a home, and have good credit—all of which make them attractive to scammers.

Additionally, seniors may be less inclined to report fraud because they don’t know how, or they may be too ashamed at having been scammed. They might also be concerned that their relatives will lose confidence in their abilities to manage their own financial affairs. And when an elderly victim does report a crime, they may be unable to supply detailed information to investigators.

With the elderly population growing and seniors racking up more than \$3 billion in losses annually, elder fraud has remained a growing problem.

Protect Yourself

- Recognize scam attempts and end all communication with the perpetrator.
- Create a shared verbal family password or phrase that only you and your loved ones know.
- Search online for the contact information (name, email, phone number, addresses) and the proposed offer. Other people have likely posted information online about individuals and businesses trying to run scams.
- Resist the pressure to act quickly. Scammers create a sense of urgency to produce fear and lure victims into immediate action.
- Call the police immediately if you feel there is a danger to yourself or a loved one.
- Be cautious of unsolicited phone calls, mailings, and door-to-door services offers.
- Never give or send any personally identifiable information, money, gold or other precious metals, jewelry, gift cards, checks, or wire information to unverified people or businesses.
- Make sure all computer anti-virus and security software and malware protections are up to date. Use reputable anti-virus software and firewalls.
- Disconnect from the internet and shut down your device if you see a pop-up message or locked screen. Pop-ups are regularly used by perpetrators to spread malicious software. Enable pop-up blockers to avoid accidentally clicking on a pop-up.
- Be careful what you download. Never open an email attachment from someone you don’t know, and be wary of email attachments forwarded to you.
- Take precautions to protect your identity if a criminal gains access to your device or account. Immediately contact your financial institutions to place protections on your accounts, and monitor your accounts and personal information for suspicious activity.

Clinton Police Department Urges Citizens to Ensure Their Security Systems Are Truly Protecting Them

At the Clinton Police Department, we are dedicated to the safety and security of our community. In recent times, we’ve observed a concerning trend: many of our residents and business owners have invested in security systems, believing these systems will protect them when it matters most. However, too often, we find that this sense of security is misplaced, not because the systems themselves are faulty, but due to oversights in their use and maintenance.

Imagine investing in a security system, only to discover after a crime that the crucial footage you were relying on wasn’t recorded. This scenario is more common than you might think, and it often happens because the system’s storage was full, improperly configured, or simply because the software was never updated. Just as a car needs regular maintenance to run smoothly, so does your security system. Failing to perform routine checks can lead to dead batteries, outdated firmware, or malfunctioning cameras—all of which can leave you vulnerable.

Another issue we frequently encounter is that security systems aren’t always set up correctly. Many people assume their systems are recording 24/7, when in reality, they might only be set to live view, leaving no record of what actually happened. Ensuring your system is configured to record continuously or during motion events can prevent this issue. Additionally, if your system relies on cloud storage, it’s important to stay on top of subscription renewals. Lapses can result in the loss of critical footage, often without the user even realizing it.

Understanding how to navigate your system’s software is equally important. We know that security software can be complex and overwhelming, especially during the stress of a crime. Unfortunately, many users struggle to search for specific time frames, download footage, or even access their recorded video at all. Familiarizing yourself with these processes before you need them can save valuable time and prevent frustration.

Even when footage is successfully located, exporting it in a usable format can be another hurdle. Some systems require specific steps to save video to a USB drive, email it, or upload it to cloud storage. Additionally, users sometimes export footage in formats that aren’t easily playable, causing further delays

in providing crucial evidence. For those using cloud storage, navigating the login process or downloading specific clips can be confusing, particularly in high pressure situations.

The fear of losing or overwriting important footage can also paralyze users, leading to hesitation in retrieving the video. This concern is understandable, but it’s essential to act quickly and carefully. Whether you reach out to a tech-savvy friend, family member, or professional, seeking assistance when you’re unsure can make all the difference.

Your security system is a valuable tool, but it requires attention and care to fulfill its purpose. By taking the time to regularly maintain your system, ensure it’s properly configured, and familiarize yourself with its software, you can protect your home or business more effectively. The Clinton Police Department is here to support you—let’s work together to keep our community safe and secure.

Preparing to Give up the Car Keys as We Age

The week of December 2-6, we recognize Older Driver Safety Awareness Week. The Clinton Police Department wants to remind you that simply getting older doesn’t mean it’s time to give up the car keys, but to evaluate how you or your loved ones drive.

In 2021 more than 20% of licensed drivers in the United States were 65 or older (FHWA, 2022). As drivers age, their physical and mental abilities, driving behaviors, and crash risks all change, though age alone does not determine driving performance. Many features of the current system of roads, traffic signals and controls, laws, licensing practices, and vehicles were not designed to accommodate older drivers. Older Americans are increasingly dependent on driving to maintain their mobility, independence, and health. The challenge is to balance mobility for older drivers with safety for all road users.

The U.S. population 65 and older increased at a much faster rate (35.1%) than the total population (7.4%) from the years 2010 to 2020 (U.S. Census Bureau, 2010, 2020). The U.S. Census Bureau estimates that by 2030 the resident population over 65 will be 73 million and will comprise 21% of the total U.S. population (Vespa et al., 2020).

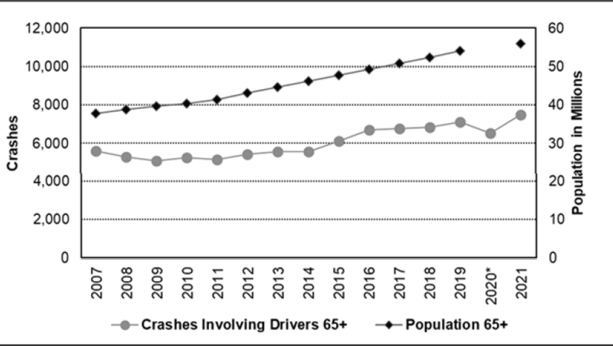
As the U.S. population 65 and older has grown, the proportion of licensed drivers 65+ has also risen, from 14% in 2001 to 21% in 2021 (FHWA, 2002, 2022). The proportion of fatal crashes involving older drivers follows a similar trend, rising from 11% in 2001 to 19% in 2021.

People 65 and Older: Number and Proportion of Total Population					
Year	Population 65+ (in millions)	% of Total Population	Licensed Drivers 65+ (in millions)	% of All Licensed Drivers	Drivers 65+ in Fatal Crashes
2001	35.3	12.4%	27.6	14.4%	6,446
2021	55.8	17.1%	49.6	21.3%	7,481
2030	73.1*	21%*	?	?	?

*Projected numbers based on 2017 population estimates
Sources: FHWA (2002, 2022); NCSA (2012); Stewart (2023); U. S. Census Bureau (2011, 2021); Vespa et al. (2020)

The number of fatalities involving older drivers has been increasing in recent years, after experiencing a period of decline from 2000 to 2009. In 2021, there were 8,209 fatalities involving older drivers compared to the 29-year low of 5,613 in 2009 (NCSA, 2012; NHTSA, 2023). However, the older population has grown at a rate faster than the increase in fatalities involving older drivers.

Fatal Crashes Involving Drivers 65+ and Population Estimates



Source: NCSA (2012); NHTSA (2023); U.S. Census Bureau (2011, 2010 to 2021).
*2020 U.S. Census American Community Survey 1-Year Estimate not available due to data quality concerns

December is National Impaired Driving Prevention Month

December is National Impaired Driving Prevention Month. Two of the most celebrated days of the year, Christmas Eve and New Year’s Eve, also are among the deadliest. Due to this, December is recognized as National Impaired Driving Prevention Month.

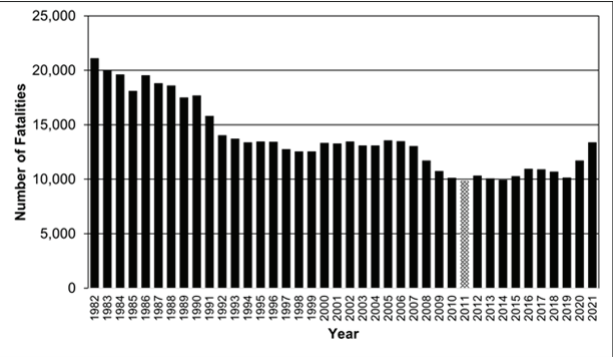
In 2021, there were 13,384 people killed in crashes involving alcohol-impaired drivers (defined as drivers or motorcycle riders with BACs of .08 g/dL or higher). This was an increase of 14.2% from the 11,718 fatalities in 2020 (National Center for Statistics and Analysis, 2023a). Fatalities in crashes involving alcohol-impaired drivers continue to represent almost one-third (31%) of the total motor vehicle fatalities in the United States. NHTSA’s most recent State Alcohol-Impaired-Driving Estimates Traffic Safety Facts (NCSA, 2023c) contains additional national and State statistics pertaining to crashes involving alcohol.

Alcohol-impaired driving dropped steadily from the early 1980s to the mid-1990s. A study showed much of this decrease could be attributed to alcohol-related legislation (e.g., .08 BAC, administrative license revocation, and minimum drinking age laws) and to demographic trends (e.g., the aging of the population and the increased proportion of female drivers) (Dang, 2008). However, during this period there also was substantial public attention to the issue of alcohol impaired driving, including the growth of grassroots organizations such as Mothers Against Drunk Driving and Remove Intoxicated Drivers, increased Federal programs and funding, State task forces, and increased enforce-

ment and intensive publicity, all which combined to address this critical traffic safety problem.

As shown in the figure below, alcohol-impaired-driving fatalities decreased 53% from 1982 to 2011. However, fatalities increased 36% from 2011 to 2021, due in part to a noticeable rise in alcohol-impaired-driving fatalities during 2020 and 2021 and the COVID-19 pandemic.

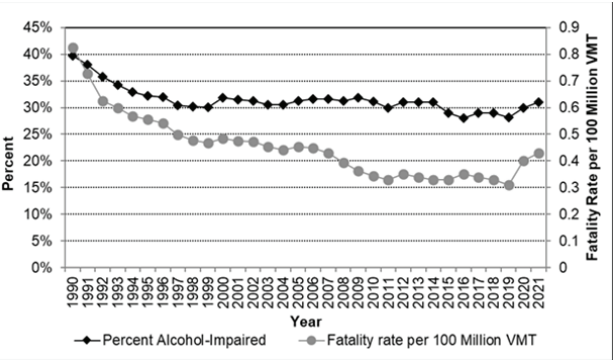
U.S. Alcohol-Impaired Driving Fatalities



Source: NHTSA (1982 to 2023)

As shown in the next chart, the rate of alcohol-impaired-driving fatalities, based on VMT, has declined noticeably over the last 3 decades. However, the percentages of fatalities in the United States that involve alcohol-impaired driving has decreased only slightly during this time.

Percentages of U.S. Driving Fatalities Who Were Alcohol-Impaired and Alcohol-Impaired Fatality Rate by VMT



Source: NHTSA (1990 to 2021), NCSA (2023a)

CLINTON POLICE DEPARTMENT
Police Officer - Applications Sought

Duties

- Communicate information to the general public, co-workers, and city personnel while promoting positive working relationships with the public and city personnel.
- Protects life and property and maintains order.
- Ability to work in a structured command environment, working as a member of a team or as an individual.
- Possess problem-solving skills and the ability to seek unconventional solutions to community problems.
- Interact and work with citizens; explain complaints to offenders, victims, witnesses; mediate family disputes; and advise victims, witnesses, and offenders on legal procedures.
- Prepare written reports as required with an emphasis on clarity, completeness, proper grammar, and punctuation.
- Performs other related duties as required.

Qualifications

- Must be 19 years of age at the time of hire
- Must have a high school diploma or GED
- Must be a U.S. citizen
- Must be able to pass an extensive background check
- No convictions of a serious misdemeanor, or higher offense
- Must reside within 20 air miles of City Hall, within their first day of work and must remain within 20 air miles of their place of employment throughout their period of employment
- If not currently Iowa certified, must become an Iowa resident with an Iowa drivers license prior to graduation from the Iowa Law Enforcement academy

Base Salary – July 1, 2023 through June 30, 2024

- Year 1 | \$56, 958
- Year 3 | \$59, 806
- Year 5 | \$62,796

Receive general wage increases as negotiated by the Police Bargaining Unit

Special Divisions

- K9 officer
- SRT – Special Response Team
- SRO
- Criminal Investigations
- Street Crimes (SCATT)
- Marine Unit
- DART
- Community Outreach
- Bike Patrol
- Drone Operators

PUBLIC WORKS DEPARTMENT

Public Works Department: Hours of Operation: 7:00 am – 3:30 pm | Phone: 563-242-2144, then option 1 (Public Works), then option 3 | Phones Answered from 8:00 am – 3:00 pm

STREET DEPARTMENT: WINTER OPERATIONS OVERVIEW

As winter approaches, the City of Clinton's Street Department is gearing up to ensure safe and passable roads throughout the season. Here's an inside look at our comprehensive approach to managing snow and ice on our roads.

Coverage and Collaboration Our team is responsible for over 400 lane miles of city streets. During major snow events, we collaborate with all Public Works departments to enhance our response capabilities and ensure a coordinated effort across the city.

Salt Application and Effectiveness Salt is a crucial tool in our winter arsenal. It's typically applied when temperatures are above 15°F because standard road salt (sodium chloride) loses effectiveness as the temperature drops. The effectiveness of salt decreases significantly below this temperature. The City starts the snow season with approximately 3,000 tons or 6,000,000 pounds of salt on hand.

Salt Brine Usage Salt brine, a solution of salt and water, is an effective pre-treatment strategy. It can be applied up to 48 hours before a storm, depending on anticipated conditions. This proactive measure helps prevent snow and ice from bonding to the pavement, making it easier to clear roads quickly once the snow begins to fall.

Snow Removal Fleet The city utilizes a robust fleet of snow removal vehicles, including plows, salt spreaders, and loaders, to manage snow events efficiently. Our fleet is well-maintained and ready to deploy at the first sign of snowfall.

Snow Emergency Declarations and Parking A snow emergency is declared when significant snowfall severely impacts road conditions. During these declarations, calendar parking requirements come into effect to facilitate street clearing. Vehicles parked in violation of these regulations may be subject to fines, emphasizing the importance of adhering to posted signs and city announcements.

CALENDAR PARKING.

- (A) General provisions. Calendar parking shall be activated with the occurrence of a snow event, which is defined as the accumulation of one inch or more of snow upon the public right-of-way.
- (B) (1) During the period from November 15 through March 15, when a snow event has occurred, parking is restricted in the public right-of-way to alternate sides of the roadway in the following manner:
- (a) On odd-numbered days, vehicles shall only be parked, stopped or left standing on that side of the roadway having odd-numbered addresses.
 - (b) On even-numbered days, vehicles shall only be parked, stopped or left standing on that side of the roadway having even-numbered addresses.
- (2) A snow event will remain in effect for 24 hours after the snow has stopped.
- (3) The hours for calendar parking will be from 9:00 a.m. to 6:00 a.m. Vehicles will have three hours to be moved to the correct side of the roadway.
- (4) The date at 6:00 a.m. shall determine if the day is odd or even.
- (5) During a snow emergency, calendar parking shall be in effect except on designated snow routes where no parking will be permitted until the snow emergency has been cancelled.
- (6) This section shall not apply to commercial districts where parking is designated on both sides of the street.

WINTER DRIVING TIPS

- For those braving the winter roads, here are a few tips:
- **Reduce speed:** Adjust your driving speed to match road conditions.
 - **Increase following distance:** Allow more space between you and the vehicle in front to provide ample stopping distance.
 - **Headlights on:** Keep your vehicle's headlights on to improve visibility.
 - **Stay informed:** Keep track of local weather forecasts and road conditions.

Understanding these operations and precautions helps residents navigate the winter safely and assists the city in keeping the streets clear and functional during the snowy months.

SNOW REMOVAL PRIORITY

Snow & ice control activities are conducted on the basis of the following priorities:

Priority 1 - Streets that are hospital and emergency routes, marked snow routes, & primary highways under City maintenance.

Priority 2 - Bus routes and other major traffic carriers.

Priority 3 - Residential and other municipal service streets, including streets in commercial areas. Cul-de-sac and dead-end streets are typically done by end loaders and at the end of priority 3 category.

Priority 1 streets will be plowed and salted before Priority 2 streets, Priority 2 streets before Priority 3 streets.

Non-Priority - Alleys. The City of Clinton does not plow or provide other snow & ice control in alleys. When all streets are cleared, heavily traveled alleys

in Central & Lyons Business Districts may be salted.

Snow will be hauled only from the Central & Lyons Business Districts. Snow plowing and hauling operations in the Central Business District will be conducted during night time hours, insofar as possible, when pedestrian and vehicular traffic is at a minimum. Business District snow removal may be performed by contractors. Parking lots will be cleared by the Grounds & Facilities Division.

Because bridges freeze before roadways, they receive early attention.

Intersections are treated as soon as possible with salt and brine in compliance with Priorities 1, 2, & 3. Hills are also plowed, salted & brine applied as soon as possible.

Isolated icy spots reported by the Police Department, MTA, residents or others will be treated as soon as possible. The public is encouraged to help the City by reporting hazardous conditions.

same manner as a property tax. The property owner is also responsible for removal of snow and ice from private driveways.

The Grounds & Facilities Division will remove snow and ice from sidewalks near City owned buildings, parks and other city-owned property.

Pedestrians are encouraged to wear winter footwear such as rubber boots and exercise caution when walking on sidewalks with snow and ice accumulations.

SOLID WASTE DEPARTMENT INFORMATION

Year to date Solid Waste Numbers as of 9/10/2024:
Clinton Garbage: 5,335.69 Tons or 10,671,380 Pounds.
Clinton Leaves and Grass: 1,419 Tons or 2,838,840 Pounds.
Recycling: 649.82 Tons or 1,299,640 Pounds.

CITY OF CLINTON SOLID WASTE DEPARTMENT UPDATE

Holiday Collection Schedule

As the holiday season approaches, the City of Clinton Solid Waste Department wants to remind residents of changes to the regular trash and recycling collection schedule:

- **Thanksgiving Day (Thursday, November 28):** No collections. Thursday's route will be serviced on Friday, November 29, and Friday's route on Saturday, November 30.
- **Christmas Day (Wednesday, December 25):** No collections. Wednesday's route will be serviced on Thursday, December 26; Thursday's on Friday, December 27; and Friday's on Saturday, December 28.
- **New Year's Day (Wednesday, January 1):** Similar adjustments as Christmas Day with collections pushed back a day accordingly.

Solid Waste Collection Guidelines

- **Service Instructions:** ensure all bin lids are closed.
- **Bin Placement:** Bins must be a minimum of 3 feet from obstructions like fences or vehicles.

Large Item Disposal

The City no longer offers curbside large item collection. Residents should take large items directly to the Clinton County Area Solid Waste Agency at 4292 220th St. For more details, call (563) 243-4749 or visit <https://www.ccaswa.com/>.

Tarping Loads



City Ordinance requires tarps/covers on all waste transported to the landfill to prevent spillage. For more details on the city's solid waste regulations, please visit the <https://www.cityofclintoniowa.gov/281/Public-Works-Department>.

Solid Waste Cart Management


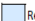


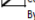
- **Cart Assignment:** Carts are assigned to addresses, not individuals, and should not be moved when changing residences.
- **Usage Instructions:** Carts should contain only appropriate materials (no construction debris or hazardous waste) and must not exceed a weight limit of 200 lbs.
- **Placement for Collection:** Carts must be out by 7:00 AM on collection day, placed at least 3 feet apart and away from obstacles.

RECYCLING PROGRAM

The city encourages recycling and operates a Single-Stream Recycling program. Details about the program and the bi-weekly schedule can be found on the City's website under the Solid Waste section. For any suggestions or further inquiries, contact the Solid Waste Department at 563-242-2144, option 1 – option 3. Residents of Clinton are encouraged to remain aware of collection schedules and proper disposal guidelines to ensure efficient service and compliance with city regulations.



Single - Stream Recycling

-  Recycle Week A
-  Recycle Week B
-  Holiday No Collections
-  Collections Delayed By One Day
-  Weekly Recycling

Su	Mo	Tu	We	Th	Fr	Sa
		1	2	3	4	5
6	7	8	9	10	11	12
13	14	15	16	17	18	19
20	21	22	23	24	25	26
27	28	29	30	31		

Su	Mo	Tu	We	Th	Fr	Sa
					1	2
3	4	5	6	7	8	9
10	11	12	13	14	15	16
17	18	19	20	21	22	23
24	25	26	27	28	29	30

Su	Mo	Tu	We	Th	Fr	Sa
1	2	3	4	5	6	7
8	9	10	11	12	13	14
15	16	17	18	19	20	21
22	23	24	25	26	27	28
29	30	31				

PLEASE DO NOT RECYCLE THE FOLLOWING IN YOUR BLUE CART:

- Styrofoam
- Any items with food residue or grease stains
- Gift wrap/Wrapping Paper
- Window glass, glass dishes or ceramic
- Metal building materials or scraps
- Aerosol cans
- Plastic bags (take back to grocery stores that accept them)
- Batteries

SEWER MAINTENANCE: ESSENTIAL FUNCTIONS AND EQUIPMENT

Sewer maintenance is a critical public works function that ensures the proper functioning and sanitation of a city's wastewater management system. This work involves maintaining and repairing the sanitary sewer and storm sewer systems to prevent overflows, environmental contamination, and to ensure efficient waste management.

Key Equipment Used in Sewer Maintenance

- **Vacuum Truck:** This vehicle is equipped with a powerful vacuum and storage tank. It is primarily used to remove sludge, debris, and standing water from sewer lines and storm drains. This helps to prevent blockages and maintain the flow efficiency of the sewer system.
- **Jet Truck:** Also known as a jetter, this truck uses high-pressure water streams to clean and clear out blockages in sewer lines. The high-pressure water can break up and dislodge debris, grease, and roots that may be clogging the pipes, restoring normal flow.
- **Camera Truck:** Equipped with advanced video surveillance technology, the camera truck is used for sewer line inspections. It employs a remotely operated camera to visually inspect the interiors of sewer pipes. This helps in identifying cracks, blockages, and other structural problems without the need for invasive methods.

What Not to Put into Sewers

To maintain the integrity and functionality of sewer systems, it's important that residents avoid disposing of certain materials into sanitary and storm sewers:

- **Sanitary Sewers:** Avoid flushing non-biodegradable items such as wipes (even those labeled "flushable"), hygiene products, fats, oils, greases (which can solidify and cause blockages), and hazardous chemicals.
- **Storm Sewers:** These are designed only for rainwater and melted snow. Dumping automotive fluids, paints, and other pollutants can lead to environmental contamination, as storm sewers often discharge directly into natural water bodies without treatment.

Effects of yard clippings and leaves in the storm sewers.

- **Blockage and Flooding:** When leaves and grass clippings enter storm drains, they can accumulate and clog the drains and pipes, restricting the flow of water. This blockage can cause water to back up, leading to street flooding and potential damage to nearby properties.
- **Increased Maintenance Costs:** Municipalities must spend more on maintenance and cleanup efforts to clear blocked drainage systems and repair damage caused by flooding and clogs. This also includes the cost of increased inspections and potential fines from regulatory bodies for non-compliance with water quality standards.
- **Harm to Aquatic Life:** Decomposing organic matter and the resultant low oxygen levels can be lethal to fish and other aquatic organisms. The decay process also releases pollutants that can be harmful to wildlife.
- **Encouragement of Pests:** Stagnant water caused by blocked drains can become a breeding ground for pests like mosquitoes, which can carry diseases, further impacting public health and quality of life.

Therefore, it is crucial to properly dispose of yard waste by composting, mulching, or using designated yard waste bins provided by local waste management services to avoid these adverse impacts on stormwater systems and the environment.

Sanitary Sewer Overflows (SSOs)

A sanitary sewer overflow occurs when untreated sewage is discharged into the environment before reaching sewage treatment facilities. Causes of SSOs include:

- Blockages caused by debris or roots.
- Excessive water inflow/infiltration during heavy rain.
- Sewer defects that allow sewage to escape.

Resolving Sewer Issues

The process of addressing sewer maintenance issues typically involves:

- **Inspection:** Using camera trucks to assess the condition inside the pipes and locate problems.
- **Clearing Blockages:** Utilizing jet trucks to clear out blockages with high-pressure water.
- **Debris Removal:** Employing vacuum trucks to remove debris and prevent blockages.
- **Repair and Maintenance:** Conducting repairs on damaged pipes and infrastructure to prevent future issues.

By maintaining this essential infrastructure, sewer maintenance teams play a vital role in protecting public health and the environment. Proper disposal practices by residents and routine maintenance are crucial in preventing SSOs and ensuring the efficient operation of the sewage systems.

REGIONAL WATER RECLAMATION FACILITY (RWRF) DEPARTMENT

RWRF WASTEWATER TREATMENT PLANT: CONSTRUCTION PROGRESS

Clinton, Iowa – Regional Water Reclamation Facility (RWRF) is making significant strides in its ongoing construction project to upgrade its wastewater treatment capabilities. Key components of this upgrade include the installation of an ADI-BVF reactors, centrifuges, and a sludge dryer. These additions will enhance the plant's ability to treat wastewater more effectively and efficiently, while also reducing its environmental footprint.

ADI-BVF Reactor: A New Era in Wastewater Treatment

The heart of the RWRF upgrade is the ADI-BVF reactor. This innovative technology combines anaerobic digestion and biological flocculation to break down organic matter in wastewater. The reactor will significantly improve the plant's solids reduction and biogas production, leading to a more sustainable and environmentally friendly operation.

Centrifuges: Enhancing Solids Separation

To complement the ADI-BVF reactor, the RWRF is installing state-of-the-art centrifuges. These machines will be used to separate the solids from the liquid portion of the treated wastewater. By improving the solids separation process, the plant can produce a higher-quality biosolids.

Sludge Dryer: Reducing Sludge Volume and Improving Handling

The final component of the RWRF upgrade is the sludge dryer. This equipment will reduce the moisture content of the biosolids, making them easier to handle and transport. By drying the sludge, the RWRF can also significantly reduce the volume of waste that needs to be disposed of, further minimizing its environmental impact.

Construction Progress and Timeline

The construction of the ADI-BVF reactor, centrifuges, and sludge dryer is progressing smoothly. The RWRF has experienced minimal delays and is on track to complete the project within the expected timeframe. Upon completion, these upgrades will position the RWRF as a leading-edge wastewater treatment facility, capable of meeting the highest standards of environmental performance.

The RWRF's investment in these new technologies demonstrates its commitment to providing a clean and healthy environment for its community. By improving its wastewater treatment capabilities, the plant is not only protecting local waterways but also contributing to a more sustainable future.

BUILDING & NEIGHBORHOOD SERVICES

BUILDING PERMITS, ZONING PERMITS, AND INSPECTIONS

Talk to the Permit Office / Building and Neighborhood Services

Some people fear that the moment you call the local building inspectors and permit office, you immediately are flagged. This simply isn't true. The permit office exists to ensure that home & commercial improvements are done safely and pose no risk to occupants, and BNS inspectors and administrative support are happy to answer questions.

Do I need a Permit?

Generally speaking, you are allowed to replace most existing elements of your home without a permit, while anything that changes the structure of your home or represents a real estate improvement, will require a permit. You can replace a broken wall switch or worn-out faucet, for example, but adding a deck or room addition calls for a permit. Roofs, siding, water heaters and furnaces all require permits and inspections. If you are in doubt, or have any questions, call BNS and ask. Many times, if a permit and inspections aren't needed, BNS will issue a "No Fee" permit, which indicates you have spoken to us about your work scope, and it doesn't require permitting.

Property Owner and Building Permits...Not a Problem

Some property owners worry that BNS will not allow them to do their own work and will only issue permits to professional contractors. This is not true since inspection officers routinely issue permits to property owners to do all kinds of work themselves—up to and including serving as a GC (general contractor) when building an entire house. As an owner/builder, you can act as your own general contractor instead of hiring one. This does allow you to save on construction costs, but you also carry the burden of potential liabilities, many of which can be serious. Hiring a licensed, insured, bonded contractor better insulates you from these liabilities. Property owners are allowed to do minor work for commercial construction projects, but licensed contractors for specialized work are required. Homestead homeowners are allowed to do most projects themselves, but are required to hire a licensed electrical contractor for any work associated with electric service / electric panel. Check with Building and Neighborhood Services to see what is required for your project.

Whether a licensed contractor, commercial property owner, or homeowner, all projects are still required to meet building codes. Clinton

currently works off the 2018 IBC, 2018 IRC and 2020 NEC.

Inspections Are Mandatory

The inspection is an integral part of the overall permit process, and under no circumstance should you or your contractor ignore this step. Most minor permits, like roofs, water heaters, or furnaces, only require one inspection. With some projects, several inspections will be required. This is not something to fear since the inspector is there just to make sure the work has been done correctly. It is often a very brief, perfunctory visit. Inspectors may be a little more diligent about the inspection if the work has been done by a homeowner, as they are less familiar with current building codes, but it is still a very routine process.

Failing an inspection is not as big of a deal as you would think. Most inspectors will give you every opportunity to correct any problems that have been flagged. Though inspectors don't prefer re-inspects, they will return as many times as needed to pass the work and close out the permit. The most important thing is that the project outcome is a safe structure.

If you had a water heater or furnace installed on your property, and there is not an "APPROVED" sticker from our office on the appliance, call to set up an inspection. 563-244-3360. The cost of the inspection is included in the permit fee.

Not Getting a Building Permit Can Be Costly

It can be very tempting to ignore the permit process and to hide the work you are doing, especially if it is inside the home where you can work without anyone seeing it. If it comes to light that you have done work without a required permit, you could be forced to apply for a permit after the fact, at a greatly increased cost. And you might even have to tear out walls or ceilings in order for the work to be inspected. If you made any mistakes, though unlikely, you could be forced to demolish the entire job and start over.

Your homeowner's insurance coverage can also be affected. For example, should you have a flood or fire due to poor plumbing or electrical work, your insurance policy has a case for denying coverage if the work was done off-permit.

(Note: If you are doing a "Flip House", or it is a rental property, licensed contractors are required for mechanical, electrical, and plumbing work.)

Can I park in my front yard?

Yes, but there are a few ordinances to follow. Front yard parking must be on a hard surfaced driveway. Hard surface is blacktop or concrete. Yes, gravel is hard, but it is not considered a solid hard-surfaced driveway. The driveway must lead to a garage, carport, or side yard parking. If you are putting in a front yard driveway, be sure to get your NO FEE flatwork permit from Building and Neighborhood Services. If you are in the right-of-way, be sure to check with the City of Clinton Engineering Department for your right-of-way permit. (Ordinances on front yard parking can be found in Sections 79.07 & 159.065 of the Code of Ordinances.)

Building and Neighborhood Services' Mission

The mission of Building & Neighborhood Services is "To protect the health, safety, and welfare of the community through excellence in customer service, code administration, education, and enforcement."

Building codes are minimum requirements that help safeguard the health, safety, and welfare of all building occupants. Building codes govern the design, construction, remodeling, and maintenance of structures. Ensuring fire safety is the primary focus of building codes, including but not limited to: keeping the structure from catching on fire, stopping a fire from spreading in a structure or to another structure, and allowing safe evacuation of building occupants from a burning structure. Building codes also include guidance on all the common parts of a building, including the structure itself, as well as plumbing, electrical, mechanical systems. All structures within our community, including homes, multi-family buildings, commercial, industrial, and institutional buildings, must conform to the rules stated in the adopted building codes. In order to ensure that buildings conform to the rules of the adopted building codes, our office will issue a building permit, and then we'll stop by for an inspection. It's through these inspections where we fulfill our mission, by ensuring that the work being done is up to code (code administration). If the work being done does not meet code, then the proper corrections are made, in order to ensure that it does (enforcement and education). Lastly, when the work being done meets code, we are able to ensure the building is safe, and the customer has gotten what they paid for (protecting the health, safety, and welfare of the community), all of which is excellent customer service!



Felix Adler
Children's Discovery Center
Clinton, Iowa's Children's Museum!



332 8th Avenue South
Clinton, Iowa 52732
(563) 243-3600

Online Silent Auction

November 16 - 25

www.32auctions.com/DiscoveryCenter2024



Support **Learning Through Play** with the Online Auction -- gift certificates, experiences, great holiday ideas!

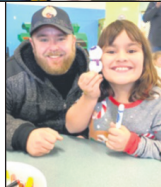


Milk & Cookies with SANTA

Saturday, November 30 • 11 am - 1 pm



Cookies • Crafts
Family Fun
Bring your camera!



RESTHAVE
CARE & REHABILITATION

- Continuum of Care All Under One Roof
- Not-for-profit Christian Home
- All Private Rooms
- Now VA Contracted
- Medicare Certified Skilled Care, Assisted Living Apartments and Long-term Nursing Care
- Hospice Suite
- Gorgeous, Spacious Chapel
- Excellent Nutritious Meals
- Community Centered

- Lovely Walking Path and Raised Gardens
- Wonderful Library and Sharing Library
- Fun, Diversified Activities
- Comprehensive Infection Control Protocols

HURRY
only two assisted living apartment available!

NOW VA CONTRACTED



Resthave is an equal opportunity provider and employer

Over 60 Years of Compassionate Christian Care

COMMUNITY DEVELOPMENT

NUISANCE ABATEMENT - Chapter 90
We've all seen the signs of nuisances - "We Buy Houses" and "We Buy Diabetic Test Strips" in the right-of-way, tacked to trees and poles; graffiti on street signs, underpasses and the sides of buildings; trash and yard waste at the curbside every day; and mattresses, bags of trash, and shopping carts dumped on vacant lots. These nuisances help us realize that "small" disorders lead to larger and larger ones in our town.

Tackling nuisances is a never-ending challenge, but it is also critical to maintaining vibrant, healthy neighborhoods and helps improve our community.

Nuisance complaints are handled year-round, and complaints are never ending for the Code Enforcement Officers. If you have a nuisance property in your neighborhood, please contact our office.

(A) Whatever is injurious to health, indecent, or unreasonably offensive to the senses, or an obstruction to the free use of property so as essentially to interfere unreasonably with the comfortable enjoyment of life or property is a nuisance.

The following conditions are some of the things that are deemed to be nuisances:

- Filth or noisome substance
- Sanitation
- Accumulation of rubbish or garbage
- Junk & Junk Vehicles
- Unsafe Structure
- Trees / Bushes
- Property Maintenance
- Vacant and/or Abandoned structure
- Dead/diseased or dying trees

VACANT AND/OR ABANDONED PROPERTIES CHAPTER 104

(1) Any building or portion thereof which meets the criteria set forth in Iowa Code § 657A.10A.

(2) Mere vacancy alone shall not cause a building to be considered abandoned. However, a "vacant building" which meets the definition herein will be considered "abandoned" upon notice and due process to the owner stating that the building is vacant and that, in addition to being vacant, possesses one or more of the additional criteria contained in the definition herein of "vacant building" or one or more of the criteria listed in Iowa Code § 657A.10A. Owners shall be afforded 30 days to correct any identified criteria prior to the building being added to the abandoned building list. Further, vacant buildings shall be removed from the abandoned building list upon notice from the owner.

BUILDING CODE. The International Residential Code promulgated by the International Code Council, as adopted by the city.

BUILDING AND NEIGHBORHOOD SERVICES DIVISION. Under the Clinton Fire Department, the division that enforces and inspects all adopted building and housing codes as adopted by the city.

DANGEROUS BUILDING. Any building or structure which meets the definition of this term specified in § 150.02.

FIRE CODE. International Fire Code, as adopted by the city.

HOUSING CODE. The city residential housing code, as adopted by the city.

NUISANCE. Each of the following shall be defined as a **NUISANCE**:

(1) Any public nuisance known at common law or in equity jurisprudence.

(2) Any attractive nuisance which may prove detrimental to persons whether in a building, on the premises of a building, or upon an unoccupied lot.

(3) Whatever is dangerous to human life or is a menace to the public health, welfare or safety as determined by the City Manager.

(4) A building that is structurally unsafe, unsanitary or not provided with adequate safe egress, or that constitutes a fire hazard, or otherwise constitutes a hazard by reason of inadequate maintenance, dilapidation or obsolescence or abandonment.

(5) Uncleanliness to the risk of unhealthiness, as determined by the Building and Neighborhood Services Division.

(6) Whatever renders air, food or drink unwhole-some or detrimental to the health of human beings,

as determined by the Building and Neighborhood Services Division.

(7) Any condition falling under the definition set forth in § 90.01.

VACANT BUILDING. Any building or portion thereof which has been unoccupied for a continuous period of time over six months, which is currently the subject of any housing, building, fire, health or zoning code violation, and which meets any one or more of the following criteria:

(1) Unsecured or secured by means other than those used in the design of the building, or in a manner that is unsafe, ineffective in keeping unauthorized persons from gaining entry;

(2) Declared a "dangerous building" as defined in this section, and/or having had a fire or other such catastrophe that requires rehabilitation before occupancy is allowed;

(3) Unfit for occupancy as determined by the Building and Neighborhood Services Division;

(4) Noncompliant with the current property management codes adopted by the city;

(5) Open to vagrants, vandals, children or the unwary; or

(6) Not receiving service by public utilities.

(Ord. 2545, passed 10-25-2016; Ord. 2678, passed 5-25-2021)

§ 104.02 REQUIREMENT TO REGISTER ABANDONED BUILDING.

No person or business shall own or maintain an abandoned building as defined by this chapter, in the city unless such person or business holds a current unrevoked abandoned building registration certificate. Registration forms can be found on the City of Clinton's web page under Community Development. If you have questions or concerns about a vacant or abandoned property, please contact the Community Development Department.

SIGNS PLACEMENT Chapter 159.048

We have all seen the bright yellow signs (WE BUY DIABETIC TEST STRIPS), as well as campaign and for sale signs on corners and on busy streets. Signs in the public right-of-way are not allowed by the City code.

(I) A sign may be located in a required yard unless specifically restricted therefrom.

(J) No sign or sign structure other than an official traffic, street or other sign approved by the city shall be placed on any public right-of-way.

This also includes garage sale signs or property for sale signs; these can be placed upon your own property in your front yard, not the area between the sidewalk and the curb. In addition to the right of way, signs are not permitted on public property including parks, utility poles, traffic sings, shelters, trees, garbage cans and benches.

By not having these signs in the right-of-way, we can be assured there are no obstruction of views on the roadway. It also makes the streets and our neighborhood look nice.

CITY GARBAGE, YARD AND RECYCLING TOTES City Chapter 50.23

Please be mindful of your City totes; they are not to be left out in the street taking up parking spaces or left at the right-of-way once they have been dumped. Leaving carts out past your garbage day could result in a damaged cart and/or missing carts as well as they take up parking spaces on the street if left out.

(2) No solid waste, garbage container or yard waste container or single-stream recycle container shall be deposited by any person upon any sidewalk, crosswalk or roadway, or upon any alley right of way, so as to obstruct or block pedestrian movement or vehicular traffic.

(3) No person shall deposit a garbage, yard waste, or single-stream recycle container upon the parking, terrace or alley more than 12 hours before the date designated for garbage, yard waste, or recycle collection. No person shall allow garbage, yard waste, or single-stream recycle containers to remain on the parking, terrace or alley for more than 12 hours after the date designated for solid waste collections.

(4) All garbage, yard waste, or recycle containers shall be stored behind the front yard building setback, except when placed on the parking, terrace or alley

on the designated date of collection.

STREET USE AND PLACING OF DEBRIS Chapter 97.003

As the leaves are falling, please reminder to not blow or rake the leaves into the street. This is against City ordinance. Leaves in the street can clog up the storm sewer grates which can cause issues during heavy rains such as street flooding.

It is unlawful for any person to throw or deposit on any street or alley any glass, glass bottles, nails, tacks, wire, cans, trash, garbage, rubbish, litter, leaves, grass or any other debris likely to be washed into the storm sewer and clog the storm sewer system, or any substance likely to injure and person, animal or vehicle.

DUMPING OF SNOW ON CITY STREET Chapter 97.010

It won't be long and the snow will be flying. Please keep in mind not to shovel, blow and place snow from your property onto City streets or another person's property. This also includes not pushing or plowing snow across the roadway to place on the other side of the road.

It is unlawful for any person to throw, push or place or cause to be thrown, pushed or placed, any ice or snow from private property, sidewalks or driveways onto the traveled way of a street or alley so as to obstruct gutters, or impede the passage of vehicles upon the street or alley or to create a hazardous condition therein; except where, in the cleaning of large commercial drives in the business district it is absolutely necessary to move the snow onto the street or alley temporarily, the accumulation shall be removed promptly by the property owner or agent. Arrangements for the prompt removal of the accumulations shall be made prior to moving the snow.

SIDEWALK SNOW / ICE REMOVAL RESPONSIBLTY Chapter 97.027

Residential sidewalks
Sidewalks need to be cleared of snow and/or ice

to ensure the public safety. Tags will be placed on doors of residential properties if a complaint is received regarding sidewalks not being cleared after 48 hours of the weather event stopping.

Business district sidewalks
(1) Sidewalks on the following streets are hereby defined as business district sidewalks:
(a) Main Avenue between Harding and Third Streets;
(b) North Second Street between Twenty-Third Avenue and Main Avenue;
(c) Fourth Avenue South between First and Third Streets;
(d) Fifth Avenue South between First and Fourth Streets;
(e) Sixth Avenue South between First and Fourth Streets;
(f) Seventh Avenue South between Second and Fourth Streets;
(g) Eighth Avenue South between Second and Fourth Streets;
(h) First Street between Fourth and Seventh Avenues South;
(i) Second Street between Third and Eighth Avenues South; and
(j) Third Street between Fourth and Eighth Avenues South.

In the event snow and/or ice remains on a business district sidewalk for more than 12 hours after the snow stops falling, or after ice forms, the city may remove the snow or ice from the sidewalk. The cost of the actual removal, plus a filing fee will be assessed against the property.

Sidewalks other than business district sidewalks
This division applies to all sidewalks not defined as a business district.

In the event snow and/or ice remains on the sidewalk for more than 48 hours after the snow stops falling or after ice forms, the City may remove the snow or ice from the sidewalk. The costs of actual removal, plus a filing fee will be assessed against the property.

THE CLINTON HERALD'S 16TH ANNUAL

Thanksgiving

FOOD DRIVE

GIVE THANKS, GIVE FOOD, GIVE HOPE

Drop off food drive donations to any of these locations by Nov. 22nd:

• 1st Gateway Credit Union

• Addington Place

• Aegis Credit Union

• Camanche Veterinary Clinic

• Central Bank - IL

• Clausen Trucking & Warehousing

• Clinton National Bank

• Clover Hills Appliance

• Don's Jewelry

• DuTrac Community Credit Union

• Eagle River Liquor

• Fareway

• Gateway Motors

• Great Revivalist Brewery

• Legends Draft Haus

• Pizza Ranch

• Sloan Implement

• Sweetheart Bakery

• The Alverno

• The Clinton Herald

• Turner Appliance

• Zirkelbach Home Appliances

LESLEIELECTRIC

Industrial
Commercial
Residential
Agricultural

Electical
Bucket Truck - Auger Truck
Underground Locate - Fault Locates - Trenching

563-242-2868

Visit Our Expanded Location
2014 Lincoldway, Clinton, Iowa

Free Estimates
Licensed/Insured/Bonded



YWCA CLINTON

Eliminating racism, empowering women and promoting peace, justice, freedom and dignity for all.



CHILDCARE SERVICES

YWCA Clinton proudly offers childcare for ages 6 weeks to 11 years at **two convenient locations**.

Extended care childcare is available at the YWCA Downtown Campus, 6am-9pm, Monday - Friday.

Our childcare curriculum supports our philosophy and belief that children learn best when they are actively engaged in play. Modeled after the Creative Curriculum Program used in our preschool, our childcare curriculum engages children's minds, allowing them to obtain a deeper understanding of the everyday world around them.



Downtown Campus Lyons Campus

317 7th Ave S,
Clinton, IA 52732
Monday-Friday
6:00am-9:00pm

250 20th Ave N,
Clinton, IA, 52732
Monday-Friday
6:00am-5:30pm

WINTER BREAK CAMP:

Winter Break Camp: December 23rd-Jan 2nd

Join us for fun activities, games, crafts and swimming on Dec. 23rd - Jan 2nd from 6am to 6pm. Children should bring a sack lunch, swimming suit and towel. *Space is limited.* First-come, first-served. Holiday Programs are included in the weekly rate of \$90 per week for part time children and \$165 per week for full time children. Sign up today! Call (563) 242-2110 x 204 or email childrenscenter@ywcaclinton.org. Visit www.ywcaclinton.org/about-ywca-cc



SWIM LESSONS

YWCA Clinton offers swim lessons for ages 6 months to adult. Private Lessons are available based on instructor availability. To register: sign up online or call us at (563) 242-2110 x 300.

Session Sign Up: November 4-10th

Session: November 11 - December 21st

NO LESSONS THE WEEK OF THANKSGIVING

Lifeguard Class Dates:

November 4-10th: Monday-Friday 5:30pm-9pm, Saturday 10-5pm, and Sunday 12-3pm.

Cost is \$150 for members and \$175 for nonmembers. We are currently offering an option to lifeguards who sign a 1 year contract to lifeguard at YWCA. They will get the cost of the class reimbursed to them over the year as they finish out their contract. Students will need to be 15 years or older.



STRONG BRAIN, WHOLE CHILD INITIATIVE

Strong Brain, Whole Child is a new 2-Gen, holistic program for 3 year old preschool students and their families. Active participating families will receive a Family membership to YWCA Clinton! This program includes 3-year-old preschool, connections to financial assistance, and wrap-around childcare. We'll help connect qualified families to financial assistance and scholarships.



Call our childcare director, Amanda at 563-242-2110 x204, email

childrenscenter@ywcaclinton.org or visit ywcaclinton.org/sbwc

JOIN THE YWCA CLINTON FITNESS CENTER!

YWCA Clinton Fitness

Membership Includes:

- Use of our **EXERCISE FACILITIES**, including the weight room, cardio room, and locker rooms.
- Access to the **SAUNA** to relax in, to recover, and feel great!
- An average of **80 FITNESS CLASSES PER WEEK** on land and in the water with a full access membership, including BodyPump, Yoga, Cycling, Aquacize, Senior Classes, and more!
- Entry to our **INDOOR POOL** and all its services, such as lap swimming, water-based fitness classes, water therapy, open swimming, and family fun, available with a full membership!
- **FINANCIAL ASSISTANCE PROGRAMS** to ensure access for all.



More YWCA Clinton Fitness Center Services:

- **IN-BODY COMPOSITION ANALYSIS** to break down your body type percentages and develop a personalized workout routine!
- **PERSONAL TRAINING PACKAGES** to help you learn new exercise routines and provide motivation to improve your overall health and wellness!

To sign up for a fitness membership or another of YWCA Clinton Fitness Center's services, visit our front desk or call us at 563-242-2110. Contact our Health & Wellness Manager, LuAnn Larson, at health@ywcaclinton.org with questions. Learn more about our memberships and classes at ywcaclinton.org

SAVE THE DATE FOR THE COLDEST NIGHT OF THE YEAR WALK 2025 #CNOY



The Coldest Night of the Year is a winterrific family-friendly walk to raise money for local charities serving people experiencing hurt, hunger, and homelessness. Save the date February 25, 2025 - team up, fundraise, walk, and gather for food... because it's cold out there.



Stay tuned to www.ywcaclinton.org for all of the most up-to-date information or follow us on Facebook at facebook.com/ywcaclintonEC

DON'T FORGET YOUR FITNESS!



November 25 - Jan 5th

During the holidays it's easy to let your healthy habits slide. Enter YWCA Clinton's fitness challenge for a chance to win prizes and stay on track this holiday season!

Register by calling the front desk at 563-242-2110 x 300. Follow us on Facebook at

www.facebook.com/ywcaclintonHW



**2 for 1
InBody
Scans
11/25-1/5**



eliminating racism
empowering women

ywca

317 7th Ave S, Clinton, Iowa • 563-242-2110 • ywcaclinton.org • @YWCAClinton